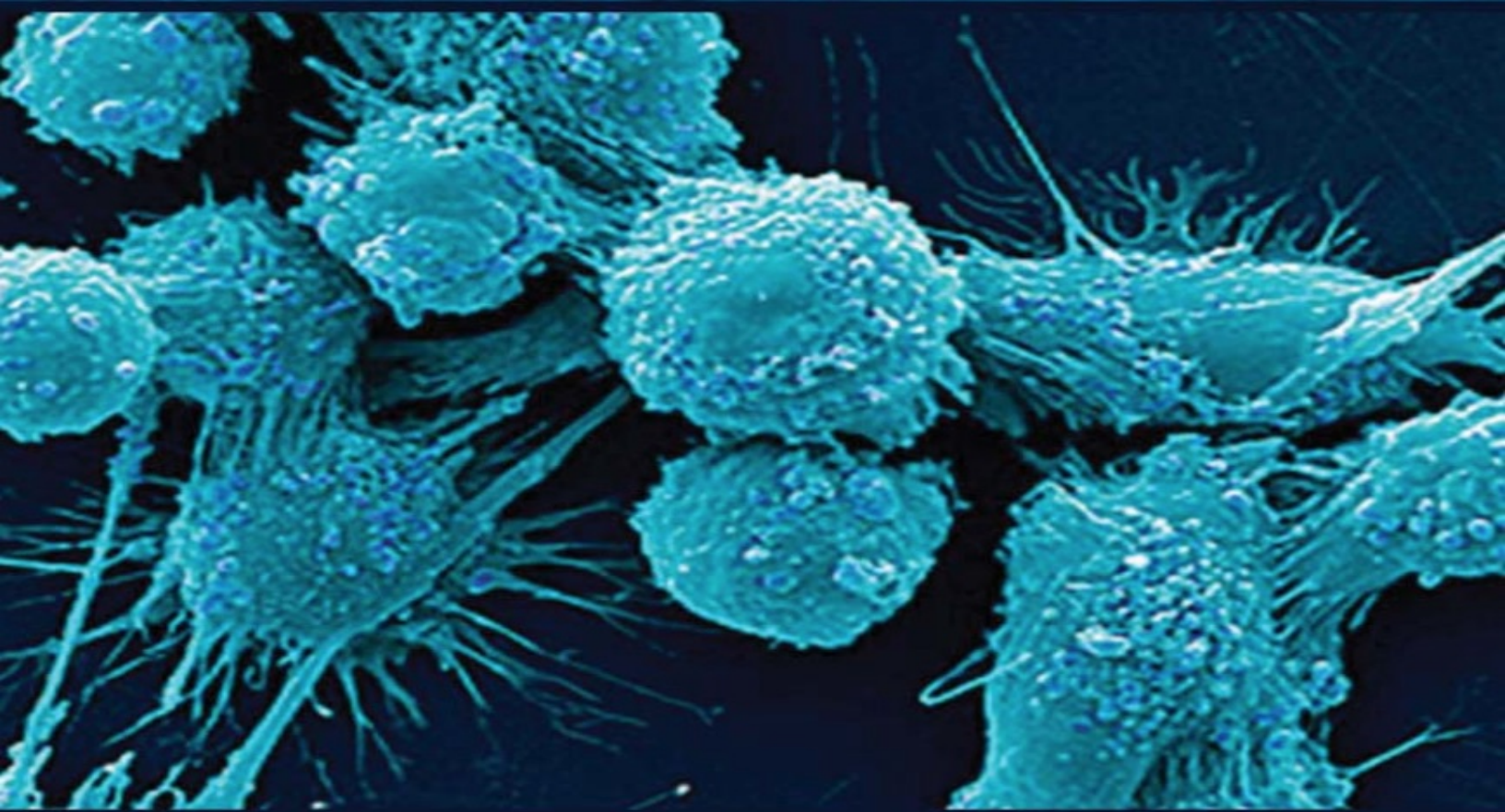


Alkalizing Nutritional Therapy in the Prevention and Reversal of any Cancerous Condition

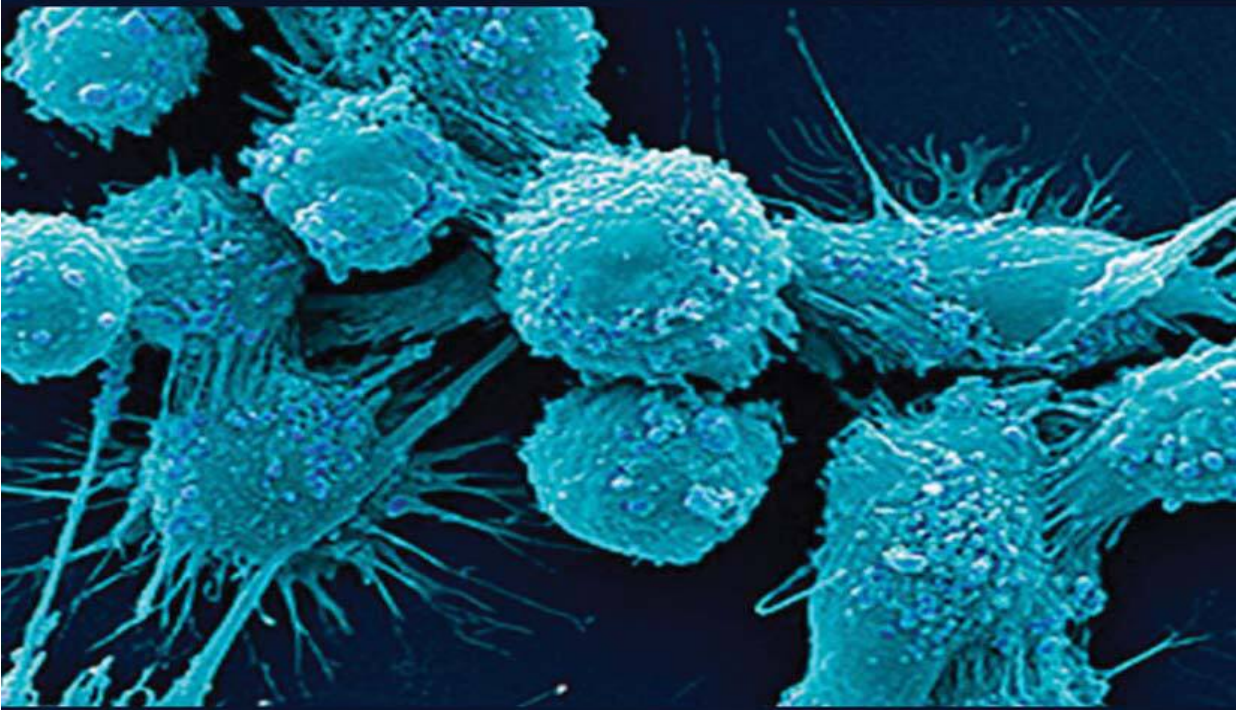


Robert O. Young MSc, DSc, PhD,

Medical Diagnostic Imaging

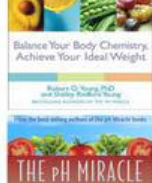
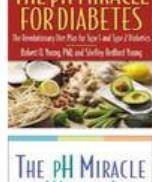
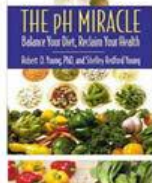
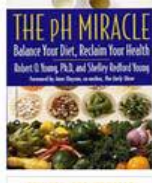
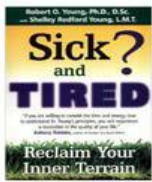
Galina Migalko MD, NMD, ARDMS

Alkalizing Nutritional Therapy in the Prevention and Reversal of any Cancerous Condition



Robert O. Young MSc, DSc, PhD, ND

Medical Diagnostic Imaging
Galina Migalko MD, NMD, ARDMS



**Published by Hikari Omni Media,
LLC 16390 Dia del Sol Valley
Center, California 92082
Copyright © 2015 by The
International Journal of
Complementary and Alternative
Medicine and Dr. Robert O. Young
All rights reserved, including the
right to reproduce this book or
portions thereof in any form
whatsoever. For information about
special discounts for bulk
purchases, please contact Hikari
Omnimedia at
phmiraclelife@gmail.com
Dr Robert O. Young and/or Dr.
Galina Migalko are available for
speaking engagements and full-**

body, non-invasive body scans or tests. Please contact The pH Miracle Center at 760-484-1075 or email phmiraclelife@gmail.com or contact Universal Medical Imaging Group at 818-987-6886 or universalmedicalimaging@yahoo.com.

Hikari Omni Media, LLC 16390 Dia Del Sol Valley Center, CA 92082 www.HikariOmnimedia.com or www.phoreveryoung.com The publisher and author are not responsible for websites (or their content) that are not owned by the publisher or author. Cover Design: Galina Mtgalko MD, NMD Photography by Robert O. Young,

**MSc, DSc, PhD, ND and Galina
Migalko MD, NMD ISBN:**

1484972406 ISBN-13:

9781484972403

**Printed in the United States of
America**

**Abstract Due to the evident
ineffectiveness of conventional
cancer treatments (e.g.
chemotherapy and radiation), more
efficient alternatives are needed.**

**The potential of Alkaline
Nutritional Infusion (ANI) as a
legitimate alternative to
chemotherapy and radiation is
examined. While largely ignored in
conventional oncology, the pH of
the interstitial fluids is suggested as**

paramount in identifying a cancerous condition. It is further suggested that cancer is an over-acidic condition of the body that can be reversed and prevented with alkalizing treatments such as ANI. Full-Body Bio-Electro Scan (FBBES) is presented as a non-invasive means to examine body pH and the presence of cancer. In addition, non-invasive Full-Body Thermography (FBT) and Full-Body Ultrasound (FBU) are presented as a noninvasive means to examine the physiology and the anatomy of the organs, glands and tissues for inflammation, calcifications, cysts and tumors in

the prevention and treatment of any cancerous condition. Finally, Live Blood Analysis (LBA) and Dried Blood Analysis (DBA) are non-invasive hematology tests for evaluating the health of the red and white blood cells and to view inflammatory and malignancy at the cellular level. In contrast to the acidosis caused by conventional cancer treatments, ANI methods such as Intravenous Nutritional Infusion (INI) and Rectal Nutritional Infusion (RNI) provide an alkalizing approach to cancer treatment and prevention.

Key Words: Alkaline, base, acidic, acid, pH, oncology, cancer,

**chemotherapy, radiation,
treatment, prevention, reversal,
conventional, alternative, infusion,
interstitial, blood, diet, exercise,
thermography, ultrasound,
hematology, immunity, bacteria,
yeast, mold, infection, malignancy,
inflammation.**

Introduction

While largely ignored in conventional oncology for decades, intravenous nutritional infusion (INI) and rectal nutritional infusion (RNI) are therapies that play a major key in recovering from and reversing any metabolic, environmental, or dietary caused “dis-ease.” But when you visit your conventional doctor for any condition or “dis-ease”, he or she will rarely address the patient’s lifestyle or diet, besides sometimes shrugging and saying, “Eat better and get more exercise.” This is generally stated to the patient without giving any specific recommendations of what to eat, what to drink or how to exercise.[1-13]

This general mindset stems from medical schools where a physician may receive only a few hours of nutritional, dietary or physical training in their nutritional, biochemistry or physiology courses on the importance of nutrition, diet and exercise. Then all training, including residency and fellowship is completely pharmaceutical-drug focused[1-13]. Only a select few take the time to be trained and mentored by traditional, integrative or naturopathic physicians that specialize in the prevention and treatment of cancer or other “dis-ease” conditions.

Powerful Insights to Non-Invasive Cancer Treatment

Alkalizing nutrition, diet and exercise is key in prevention, treatment and recovery, especially with a cancerous condition, because chemotherapy and radiation treatments deplete the nutrients and electron energy right out of the body.[14-17] This is why patients undergoing chemo lose their hair, lose weight and look so gaunt or ill—their bodies are literally starving for electron-rich alkalizing nutrition, food, and water while simultaneously loading-up with an acid-rich and toxic diet combined with their associated metabolic waste, such as lactic, uric or acetic acid. In addition, it is important to understand when dietary and metabolic acids are NOT eliminated through the four channels of elimination via urination, defecation, perspiration and respiration, these toxins will eventually buildup in the connective tissues leading to inflammation and ultimately degenerative disease, namely cancer. [18,19,20,21]

Even though oncology as a whole has ignored intravenous and/or rectal alkalizing nutritional infusions, fearing that alkalizing nutrients will adversely impact chemotherapy or radiation, they really detour patients from these kinds of supportive and non-invasive treatments. This is in spite of 280 peer-reviewed studies, including 50 human studies involving 8,521 patients that have emerged since the 1970's. 5081 subjects that were given nutrients have shown that supplementing nutrients do not interfere with conventional therapeutic modalities for cancer. [22]

Every person has unique dietary and metabolic needs, meaning that telling a patient to open wide and then administer some minerals and vitamins orally will not always do the trick. Some people need more sodium or potassium and some may need extra vitamin A or E in their diet, while others may need less. Some patients need more magnesium and others have iron deficiencies due to the poor health in the crypts of the small intestines where stem cells are made for differentiation into new and healthy red blood cells.[23]

So what are we left with? The fact is, every cancer patient needs a complete, personalized physiological, anatomical, functional, hematological and nutritional profile if he or she really wants the edge in preventing and removing the acids that cause the inflammation that leads to a cancerous condition. [18,19,20,21] Let's explore what this all means and how it can

make the difference in a patient's survival and improving the quality and quantity of life.

In The Beginning ...

Life on earth depends on appropriate pH levels in and around living organisms and cells. Human life requires a tightly controlled pH level in the serum of about 7.365 (a slightly alkaline range of 7.35 to 7.45) to survive [24].

As a comparison, in the past 100 years with increasing industrialization, the pH or acid/base balance of the ocean has dropped from 8.2 to 8.1 because of increasing CO₂ or carbon monoxide deposition. This has a negative impact on life in the ocean [25, 26] and may lead to the collapse of the coral reefs. Why? Because the ocean is using the calcium in the coral to maintain its alkalinity much like the body uses the calcium from the bones to maintain the alkalinity of the intracellular fluids, interstitial fluids and blood fluids. [24]. Even the pH of the soil in which plants are grown can have considerable influence on the mineral content of the food we eat (as minerals are used as buffers to maintain pH). The ideal pH of soil for the best overall availability of essential nutrients is between 6 and 7. Acidic soils below pH of 6 may have reduced calcium and magnesium, and soil above pH 7 may result in unavailable iron, manganese, copper and zinc to the plant. [27]

When it comes to the pH and net acid load in the human diet, there has been considerable change from the Neolithic civilization to the present. [28] With the agricultural revolution (last 10,000 years) and even more recently with industrialization (last 200 years), there has been an increase in potassium (K) compared to sodium (Na) and an increase in chloride compared to bicarbonate found in the diet. [29] The ratio of potassium to sodium has reversed, K/Na previously was 10 to 1 whereas the modern diet has a ratio of 1 to 3. [30] It is generally accepted that agricultural humans today have a diet poor in magnesium and potassium as well as fiber and rich in saturated fat, simple sugars, processed sodium containing aluminum, and processed chloride as compared to the preagricultural period. [31] This results in a diet that may induce dietary acidosis which is mismatched to the genetically determined alkaline nutritional requirements. For maintaining the alkaline design of the body fluids at a pH of 7.365 to 7.4 [32] With aging, there is a

gradual loss of renal acid-base regulatory function and a resultant increase in diet-induced metabolic acidosis while ingesting the modern or Standard American Diet. [33]

A low-carbohydrate, high-protein diet with its increased acid or proton/hydrogen load results in very little change in blood chemistry and pH, but many changes in interstitial and urinary pH chemistry: Urinary and interstitial fluid sodium and magnesium levels, urinary citrate and pH are decreased; urinary calcium, potassium, undissociated uric acid, and phosphates are increased. All of these result in an increased risk for metabolic tissue acidosis, bone loss, and an increase in blood, breast, brain, liver, gallbladder, pancreas, prostate, uterus, and kidney stones. [34] The reason for the increase in stones throughout the body is to buffer the increase of dietary and metabolic acids found throughout the fluids of the body. The increase of stones is the direct result of an increase of dietary and/or metabolic acid-load which, if not corrected, can lead to a cancerous condition in those specific areas. [35]

Alkalinity and Chemotherapy in the Treatment of Cancer

The effectiveness of chemotherapeutic agents is markedly influenced by the pH or the acid-base chemistry of the body. Numerous agents such as epirubicin and adriamycin require an alkaline media to be more effective. Others, such as cisplatin, mitomycin C, and thiotepa, are more cytotoxic in an acid media [36]. Cell death correlates with acidosis and intracellular pH shifts higher (more alkaline) after chemotherapy may reflect response to chemotherapy [37]. I have noted with many of my patients that inducing metabolic alkalosis may be useful in enhancing



chemotherapy and/or radiotherapy regimes by using alkalizing intravenous or rectal mineral and vitamin infusion therapy of sodium bicarbonate, carbicab, and furosemide [38]. In addition, extracellular alkalization with mineral salts such as sodium and potassium bicarbonate may result in improvements in the effectiveness of chemotherapy. [39]

Alkalizing Nutrition, the Immune System and How Together They Fight Cancer

In the 1880's, Louis Pasteur published his work on cellular aerobic respiration and glycolysis. [40,41] In 1931, Otto Warburg won the Nobel Prize for his work on the metabolism of tumors and the respiration of cells, which was later summarized in his 1956 paper, On the Origin of Cancer Cells. His work on cancer expanded upon Pasteur's findings and described respiratory insufficiency and a cellular metabolism of glucose fermentation increasing metabolic acidosis as the primary trigger for cancer progression [40].

Warburg's conclusions on cancer were much discussed in scientific circles, as they are academically elegant, but were not accepted by most members of the scientific community engaged in cancer research. Most cancer researchers in the late 1950's believed that the anaerobic metabolism of cancer cells and their accompanying output of lactic acid was a side effect or an adjunct effect of cancer, not a cause. Cancer research since the 1960's has focused primarily on genetic aberrations as causative for cancer, and has ignored the body of research on acidic pH as the cause of cancer and its implications for therapeutic approaches.[41]

Warburg's work was a catalyst for yet another research effort on the nature of cancerous cells, beginning in the 1930's. A. Keith Brewer, PhD (physicist) performed experiments on the relationship between energized, oxygenated cell membrane and elemental uptake, versus cellular membranes in an unenergized state such as cancerous acidic cells exhibit. He wrote a number of papers discussing the cellular mechanisms of cancerous cells and the changes in metabolism induced or indicated by the lack of or presence of oxygen in combination with other elements, particularly potassium and calcium. He noted that cancerous cells share one characteristic no matter what type of cancer: they have lost their alkaline pH control mechanism. [42]

Brewer's conclusion regarding cancer was that by changing the pH of the fluids that surround cancerous cells above 7.5 to a pH of 8 or above, they will cease to function as they need an acidic, anaerobic environment to thrive. In other words, he proposed that cancerous cells will die if they can be pushed into an alkaline, oxygenated state.[42]

Briefly, let's review: with the alternative understanding that cancer is an acidic condition of the body fluids that effect the body cells, the word cancer should be used as an adjective rather than a noun. Based upon my own clinical research, cancer is what happens to normal (i.e. healthy) cells that reside in a toxic acidic environment. Simply put, cancer is an acidic metabolic or dietary waste, like lactic acid that can potentially spoil healthy cells. Healthy cells are affected by their environment which can activate protective genes.[43] If the acidic internal environment or fluids of the body are not returned to its original alkaline state this will cause mutations or fermentation of the body cells and the lactic acids from these spoiling or

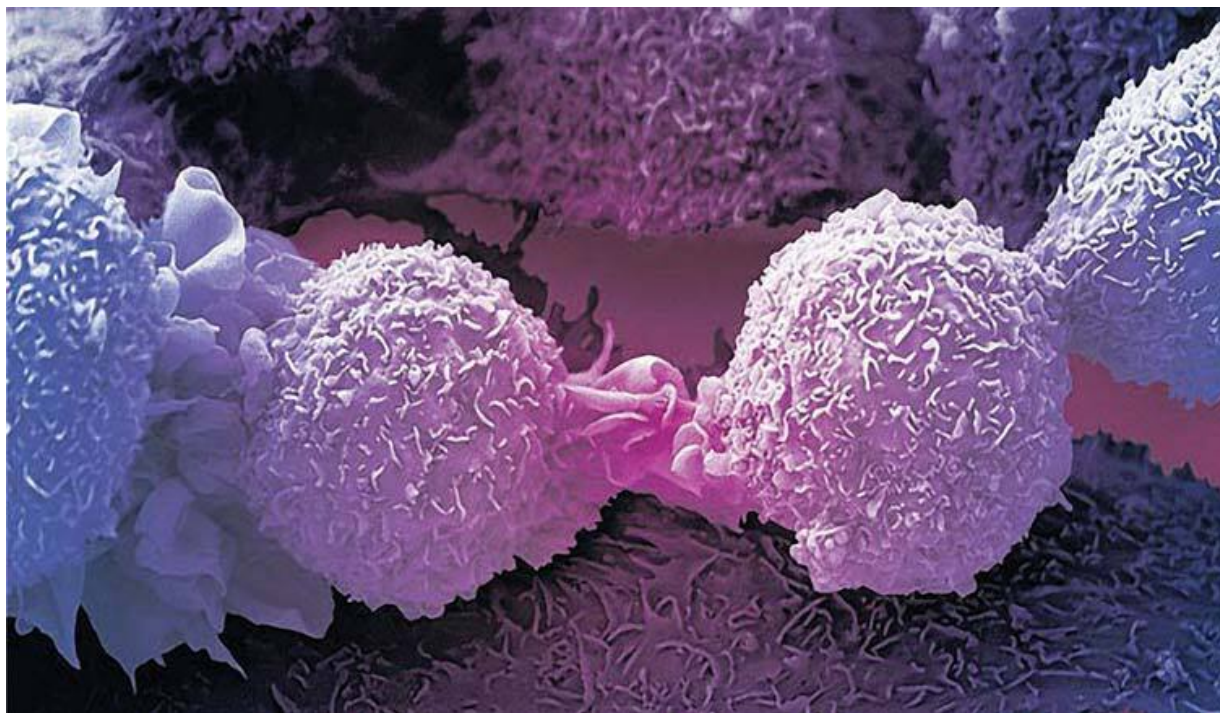
rotting cells will spoil other cells, just like one domino tipping over another domino leading to a cancerous condition.[40,41,42,110,111,112]

The reason the body can have trouble fighting or buffering the acids that cause a cancerous condition varies; in part, it has do with protecting the alkaline design of the body fluids at a pH of 7.365, the health of the white blood cells and the body's ability to neutralize metabolic and/or dietary acidic waste that has not been properly removed via the four channels of elimination—urination, defecation, perspiration, and respiration.
[110,111,112]

Poor circulation, elimination, and alkaline nutrition leads to a build-up of acidic waste and poor immune defense (the janitors of the blood and interstitial fluids to maintain internal cleanliness by picking up cellular debris or small bacteria and/or yeast.), which can increase the number of cancerous cells as one spoiled or rotting cell spoils another, much like one rotten apple will spoil a bushel of healthy apples creating an acidic microenvironment that creates more and more rotten apples or cancerous cells that would be resistant to any conventional acidic treatment.
[110,111,112]

Now, the most commonly accepted forms of cancer treatment are chemotherapy and radiation therapy. These acidic drugs and ionizing radiation will systemically destroy already acidic cancerous cells, but they may also turn healthy blood and body cells into cancerous cells. This will create an immediate response from the body to produce and release alkalizing compounds, such as sodium bicarbonate to buffer the increased amounts of acidic waste draining the body of essential nutrients, and critically paralyzing the white blood cells, making them inactive and ineffective in buffering and removing cellular metabolic waste. During these acidic conventional treatments, the immune system is essentially obliterated, which can lead to metastasis while not even affecting the primary site of the original cancerous condition.[113] According to a medical researcher, Steve Gullans, Ph.D, only 30% of people respond to chemotherapy or radiation, leaving 70% unresponsive. [44] In addition, the data is clear that after initial chemotherapy fails, as many as 95% of cancer patients will not respond to the next suggested chemotherapy drug recommended by conventional methods.[45] It is also important to understand that conventional

chemotherapy and radiation treatments for cancer are NOT a cure for cancer. [46] The National Confidential Enquiry into Patient Outcome and Death (NCEPOD) found that more than four in 10 patients who received chemotherapy toward the end of life experienced potentially fatal effects! And after reviewing data from over 600 cancer patients who died within 30 days of receiving treatment, it was found that chemotherapy hastened or caused death in 27 percent of cases. “The majority of the cancer patients in this country die because of chemotherapy, which does not cure breast, colon or lung cancer. This has been documented for over a decade and nevertheless doctors still utilize chemotherapy to fight these tumors,” said Dr. Allen Levin, MD, author of *The Healing of Cancer*.



Despite its reputation as the gold-standard cancer treatment, chemotherapy has an average 5-year survival success rate of just over 2 percent for all cancers, according to a study published in the journal *Clinical Oncology* in December 2004.[113]

Truly, the alkaline buffering system (e.g. the stomach is the main alkalizing organ and responsible to maintain alkalinity of the blood, tissues and organs by producing and secreting sodium bicarbonate on dietary, metabolic, respiratory and environmental acids), which releases antioxidants to buffer

increased acidic toxic waste build-up, is the first and last defense against a cancerous condition.[47] If alkalizing nutrition is ignored in the prevention and treatments of cancer, as it has been by conventional oncology for decades, how can a full recovery or at least a satisfactory quality of life be expected? Some oncology groups such as Cancer Centers of America, Huntsman Cancer Institute and MD Anderson Cancer Center have improved by offering in-house nutritionists and Naturopathic Doctors, but oral supplementation is insufficient in reversing a cancerous condition.

Analogously, it would be like trying to take out a forest fire with a squirt gun. Or, like treating a fish in a polluted pond without changing or cleaning the water. In other words, if the fish is sick what would you do? Treat the fish or change the water? Or if an organ or gland is cancerous what would you do treat the organ or gland or change the water? (110,111,112)

Unfortunately, most groups like Cancer Centers of America, Huntsman Cancer Institute and MD Andersen Cancer Center that advertise integrative, alternative, or naturopathic medicine for reversing a cancerous condition lack proper testing, a targeted method of administration or proper combination with personalized alkalizing treatments. In my 30 plus years of clinical research experience, providing non-invasive medical diagnostics each week, while providing oral, rectal and IV infusions of alkaline nutrition is the difference that lengthens the quality and quantity of life on over 90 percent of all patients,.[110,111,112]

Nutritional Deficiencies and Their Negative Health Effects

Below are some common alkalizing nutrients, their purpose and symptoms, as well as how frequent these deficiencies are seen in the general public in pre-cancerous and cancerous conditions and those patients receiving chemotherapy and/or ionizing radiation.

Sodium (extremely common in 9 out of 10 patients)

Purpose: Maintains alkalinity of the blood, interstitial and intracellular fluids, and provides the matrix for the transport of electrons for the energy of body cells.[48]

Common Sources: Sea salt, celery, green fruit and vegetables, sprouted seeds and grasses.

Symptoms of Deficit: Low sodium bicarbonate levels; acid reflux; excess stomach acid; headache; nausea; compensated, decompensated, and latent tissue acidosis; low energy; low interstitial and **intracellular pH**; hypertension; heart disease; diabetes; all cancers; and death. [49,72]
Potassium (extremely common)

Purpose: Increases the alkalizing compound potassium bicarbonate when the body fluids become acidic, maintains alkalinity of the blood, interstitial and intracellular fluids. The major alkalizing element in the body to maintain the alkaline design of all body fluids. The major alkaline buffer in neutralizing metabolic, dietary, respiratory and environmental acids.[50-72]

Common Sources: Avocado, almond, green fruit and vegetables, sprouted seeds, nuts and grasses. [70,71,72]

Symptoms of Deficit: Compensated, decompensated and latent tissue acidosis, low energy, low interstitial and intracellular pH, hypertension, heart disease, diabetes, and all cancers. [73]

Calcium (extremely common)

Purpose: Builds bones, teeth, assists the heart, nerves and muscles.

Common Sources: Green fruit and vegetables, sprouted seeds, nuts and grains, brazil nuts, broccoli, cabbage, dark leafy greens, hazelnuts, and salmon.

Symptoms of Deficit: Osteoporosis, osteomalacia, osteoarthritis, muscle cramps, irritability, acute anxiety and increased colon cancer risk.[74]

Magnesium (very common)

Purpose: More than 300 biochemical reactions, including muscle and nerve function, heart rhythm, immune system, strong bones, regulates calcium, copper, zinc, potassium, vitamin D.

Common Sources: Green fruit and vegetables, sprouted beans, peas, nuts, seeds, whole unprocessed alkalizing grains.

Symptoms of Deficit: Appetite, nausea, vomiting, fatigue cramps, numbness, tingling, seizures, heart spasms, personality changes, heart rhythm and colon cancer. [75]

Zinc (extremely common)

Purpose: Supports alkalizing, immune system, wound healing, taste and smell, DNA synthesis, normal growth and development during pregnancy, childhood and adolescence.

Common Sources: Found in green fruit and vegetables, sprouted seeds, grains and beans, nuts, whole grains.

Symptoms of Deficit: Growth retardation, hair loss, diarrhea, impotence, eye and skin lesions, loss of appetite, taste, weight loss, mental lethargy. [76]

Vitamin E (very common)

Purpose: This antioxidant regulates oxidation reactions, stabilizes cell membranes, immune function, protects against cardiovascular disease, cataracts and macular degeneration. [77]

Common Sources: Found in green fruit and vegetables, sprouted seeds and grains, wheat germ, nuts, seeds, dark leafy greens, avocados, asparagus and certain cold-pressed vegetable oils, like hemp oil. [78]

Symptoms of Deficit: Anemia, rupturing of red blood cells, bruising, PMS, hot flashes, eczema, psoriasis, cataracts, wound healing, muscle weakness, sterility. [77,78,79]

Vitamin B1 (very common)

Purpose: Carbohydrate conversion, breaks down fats and protein, assists digestion, the nervous system, skin, hair, eyes, mouth, liver, immune system.

Common Sources: Green fruit and vegetables, sprouted seeds and grains, brown rice, wheat germ, and bran.

Symptoms of Deficit: Age-related cognitive decline, heart problems, Alzheimer's and fatigue. [80]

Vitamin B2 (very common)

Purpose: Like Vitamin B1, works in carbohydrate conversion, breaks down fats and proteins, assists digestion, the nervous system, skin, hair, eyes, mouth, liver and also metabolism.

Common Sources: Green fruit and vegetables, almonds, sprouted seeds and grains, wheat germ, sprouts of all kinds, including soy sprouts.

Symptoms of Deficit: Anemia, decreased free radical protection, cataracts, poor thyroid function, B6 deficiency, fatigue, and elevated homocysteine. [81, 82, 83, 84, 85, 86]

Vitamin B3 (less common)

Purpose: Helps with energy, digestion, nervous system, skin, hair, eyes, liver, eliminates harmful toxins, assists sex and stress hormones and improves circulation.

Common Sources: Green fruit and vegetables, beets, sprouted seeds, nuts and grains.

Symptoms of Deficit: Cracking, scaling skin, digestive problems, confusion, anxiety, and fatigue. [87]

Vitamin B6 (common)

Purpose: Assists with buffering metabolic acids, protein metabolism, red blood cell (RBC) production, reduces homocysteine, helps nerve and muscle cells, DNA/RNA, B12 absorption, and immune function.

Common Sources: Green fruit and vegetables, especially avocado, sprouted seeds, nuts, and grains.

Symptoms of Deficit: Depression, sleep and skin problems, confusion, anxiety and fatigue. [88, 89]

Vitamin C (common)

Purpose: Aids in alkaline buffering activation, second messenger roles (i.e. transmitting hormonal information), blood clotting, cell and cell organelle membrane function, nerve impulse transmission and muscular contraction, tone and irritability. (Not to be confused with High Dose Vitamin C that acts as an oxidative therapy)

Common Sources: Supplements, broccoli, Brussels sprouts, avocado, and all green fruit and vegetables.

Symptoms of Deficit: Muscular and nervous irritability, muscle spasms, muscle cramps and tetany, tooth decay, periodontal disease, depression and possibly hypertension. [90, 91, 92]

Vitamin D (very common)

Purpose: Calcium and phosphorus levels, calcium absorption, and bone mineralization.

Common Sources: Sunlight, green fruit and vegetables, sprouted seeds, nuts and beans and fish.

Symptoms of Deficit: Osteoporosis, calcium absorption and thyroid issues, cardiovascular risks and 15 cancer risks.[93]

Folate (very common)

Purpose: Mental health, infant DNA and RNA, adolescence and pregnancy, works with vitamin B12 to regulate RBC production, iron function and reduce homocysteine.

Common Sources: Supplements, sprouted grains, tomato, green vegetables and fruit, avocado, black-eyed peas, sprouted lentils and beans.

Symptoms of Deficit: Anemia, poor immune function, fatigue, insomnia, loss of hair, high homocysteine, colon cancer, and cardiovascular disease. [94]

N-aetyl-Cysteine (very common)

Purpose: Powerful antioxidant or anti-acid, normalizes the alkaline interstitial fluid pH, urinary tract infections, neutralizes metabolic and dietary alcohol poisoning, protects lungs against toxins from air pollution and tobacco smoke.

Common Sources: Supplements, sprouted grains, sulfur-rich vegetables such as garlic, onions, parsley and cruciferous vegetables are particularly helpful in addition to avocados, squash and tomatoes.

Symptoms of Deficit: Anemia, poor immune function, fatigue, insomnia, loss of hair, high homocysteine, urinary tract infections, lung cancer, gastric cancers, colon cancer, ovarian cancer. .[95, 96, 97, **98, 99, 100, 101, 102, 103, 104]**

Glutathione (very common)

Purpose: Potent antioxidant or anti-acid, protects endothelium from dietary and metabolic acids, protects against chemotherapy toxicity, inhibits

platelets formation, buffers aflatoxins, infections of the lung, used in cases of Malaria and AIDS, supports immune system, as an alkaline effect on the body fluids.

Common Sources: Supplements, sprouted grains, sulfur-rich vegetables such as garlic, onions, parsley and cruciferous vegetables are particularly helpful in addition to avocados, squash and tomatoes.

Symptoms of Deficit: Anemia, poor immune function, fatigue, insomnia, loss of hair, infections, high homocysteine, lung congestion and cancer, gastric cancer, colon cancer, reproductive cancers in men and women, neurological and cardiovascular disease. [105, 106, 107, 108]

Consider that, if these shortages are found in a healthy population, it is not surprising that patients with a cancerous condition are far worse, due to their high acidity and metabolic demands. Though an alkaline lifestyle and diet is important, it is the amount and quality of care received at therapeutic intravenous, oral, rectal, and respiratory levels that is vital for buffering dietary, metabolic, respiratory and environmental acids in order to maintain the alkaline design of the body fluids in the prevention and treatment of any cancerous condition.

Alkalizing Non-Invasive Rectal Nutrient Infusions

One important point concerning the infusion of alkalizing nutrients: For those who do not want an invasive, intravenous infusion of alkaline minerals, salts, vitamins, chlorophyll, antioxidants such as glutathione, and-or long-chain polyunsaturated oils, you can elect a non-invasive option: rectal infusion or nebulization (these methods can just as effective). When these supportive nutrients are infused via the anus into the rectum, the hemorrhoidal vein absorbs these alkalizing nutrients into the blood stream for immediate alkalizing benefit.[110] The blood has a very narrow pH range so these highly alkalizing nutrients are pushed-out into the interstitial fluids to the body cells. This becomes a very important therapy in reducing the metabolic acids that surround the cell and cause the fermentation and break-down of cell—leading to a cancerous condition.

How Supplementation Can Kick-Start Your Recovery from a Cancerous Condition

As you can see, nutritional deficiencies can lead to a serious amount of health issues. These problems can become exponential in a patient with a cancerous condition because of the severe strain placed on the patient, especially when chemotherapy and/or ionizing radiation is involved.

To make matters worse, absorption of salts, minerals, and vitamins is impaired when the gut is congested with undigested protein from beef, chicken, pork, fish and dairy products. This means eating an standard American diet and swallowing a few minerals and vitamins is not sufficient to support the nutritional needs of the patient. Changing to an alkaline diet of fresh organic fruit, vegetables, sprouts, and grasses is essential for long-term health, but in the wake of a cancerous condition, it is hardly enough.

What needs to be done is INI and/or RNI therapies. When nutrients are channeled directly into the bloodstream and then to the interstitial fluids, the results are immediate, targeted, and dramatic. Keep in mind, this methodology is not a treatment in-and-of itself. INI and RNI therapies must be combined with personalized alkalizing therapy, alkalizing diet, exercise, proper rest and proper alkalizing water, then a revolutionary improvement in over-all health can begin. [110, 111, 112]

Using 3-D Full Body Bio-Electro Scanning (FBBES), Full Body Thermography (FBT), Full Body Ultrasound (FBU), Live Blood Analysis (LBA) and Dried Blood Analysis (DBA) to Determine the Best Possible Strategy for Preventing and/or Reversing Any Cancerous Condition and to Monitor Treatment Progress [114]

In modern day oncology, surgeons biopsy the lymph nodes to determine how cancer is spreading or provide staging [115]. Lymphocytes, a type of white blood cell that is found in these lymph nodes which are catch-basins for acidic waste and cancerous cells are responsible for breaking-down and removing cellular acidic waste and cancerous cells. Impaired lymphocytes and lymph nodes are at least one major factor in the many areas I test for (as described below) physiologically using (FBT) functionality using (FBBES) (as described below). The lymphatic system, the lymph nodes and the

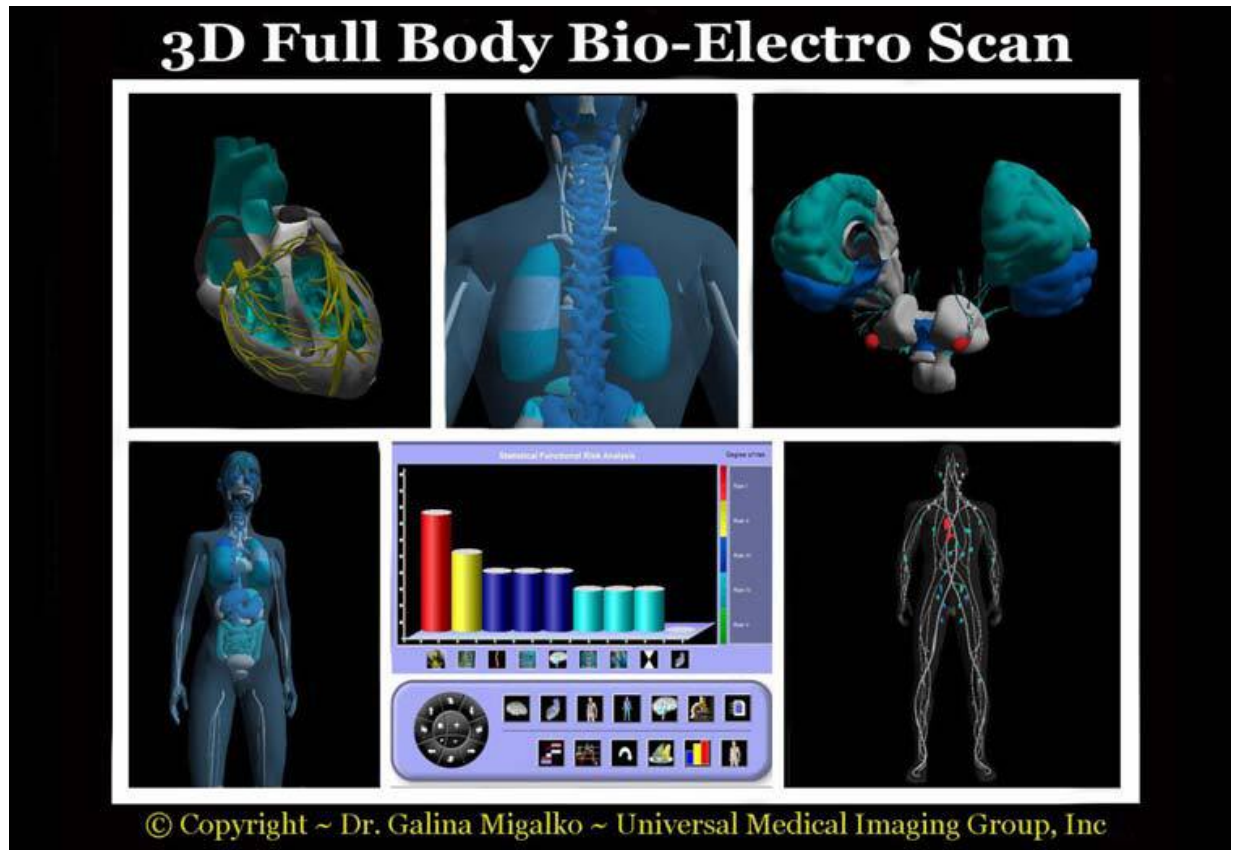
lymphocytes themselves must be functional in preventing and reversing any cancerous condition.

Using electrodes attached to the head, hands, and feet, the functionality of the lymphatic system, circulatory system, muscular system, skeletal system, endocrine system, neurological system, reproductive system, vascular system, digestive system, and respiratory system can be noninvasively analyzed. Interstitial chemistry, interstitial pH for metabolic acidosis, and the electroconductivity of the cells to determine the state of health of all organs, glands, and tissues in the prevention and reversal of any cancerous condition.[114]



This test also accounts for nutritional deficiencies and metabolic alkalosis or acidosis by measuring the interstitial chemistry, interstitial pH, and the electroconductivity of the cells of the body. Measuring the pH of the interstitial fluids is more revealing as it pertains to the pH and chemistry than measuring the blood fluids of a cancerous condition since the blood is always trying to maintain its delicate alkaline pH of 7.365 and will not vary much. Based upon my theory that cancer is a compromised acidic environment of the interstitial fluids which may negatively affect the state of health of all body cells which make up the organs, glands and tissues.[66,67] It is significantly more important to measure interstitial and intracellular fluids than blood fluids in order to obtain a correct chemistry and pH when

making nutritional recommendations in the prevention and treatment of a cancerous condition. [110,111, 112, 114, 116,117]



The following are quantitative measurements in healthy patients, without cancer, comparing blood fluids with intracellular and interstitial fluids of the body compartments as a benchmark to determine deficiencies in alkalizing minerals, protein, and whether or not the patient is in metabolic acidosis, a pre-cancerous, or cancerous condition (Note: all cancer patients are in interstitial metabolic acidosis, low in interstitial sodium and high in interstitial calcium and potassium): [116,117]

1) Sodium: Na⁺ mEq/l

Venous blood: 130, Arterial blood: 137, Capillary blood: 135, Intracellular fluid: 10 and Interstitial fluid: 135

2) Potassium: K⁺ mEq/l

Venous blood: 3.2, Arterial blood: 3.5, Capillary blood: 4, Intracellular fluid: 140 and Interstitial fluid: 3.17

3) Calcium: Ca⁺⁺ mEq/l

Venous blood: 2.5, Arterial blood: 2.2, Capillary blood: 2.3, Intracellular fluid: 0.0001 and Interstitial fluid: 1.55

4) Magnesium: Mg mEq/l

Venous blood: 0.64, Arterial blood: 0.62, Capillary blood: 0.60, Intracellular fluid:

58 and Interstitial fluid: 0.50

5) Chloride: Cl- mEq/l

Venous blood: 104, Arterial blood: 101, Capillary blood: 103, Intracellular fluid: 4 and Interstitial fluid: 106

6) Bicarbonate: HCO₃ mEq/l

Venous blood: 22, Arterial blood: 24, Capillary blood: 23, Intracellular fluid: 10 and Interstitial fluid: 24

7) Phosphorus: P mEq/l

Venous blood: 2.5, Arterial blood: 2.3, Capillary blood: 2, Intracellular fluid: 75 and Interstitial fluid: 0.70

8) Sulfate: SO₄ mEq/l

Venous blood: 0.8, Arterial blood: 0.6, Capillary blood: 0.5, Intracellular fluid: 2 and Interstitial fluid: 0

9) Glycemia mg/dl

Venous blood: 1, Arterial blood: 1, Capillary blood: 1.01, Intracellular fluid: 0.20 and Interstitial fluid: 0.90

10) Cholesterol mg/dl

Venous blood: 0.66, Arterial blood: 0.630, Capillary blood: 0.676, Intracellular fluid: 0.2 and Interstitial fluid: 0.188

11) Partial Pressure of Oxygen or PO₂ mmHg

Venous blood: 80, Arterial blood: 90, Capillary blood: 89, Intracellular fluid: 20 and Interstitial fluid: 87.2

12) Carbon Dioxide Or PCO₂

Venous blood: 46, Arterial blood: 40, Capillary blood: 42, Intracellular fluid: 50 and Interstitial fluid: 46

13) pH or potential of hydrogen

Venous blood: 7.36, Arterial blood: 7.4, Capillary blood: 7.38, Intracellular fluid: 7.2 and Interstitial fluid: 7.36

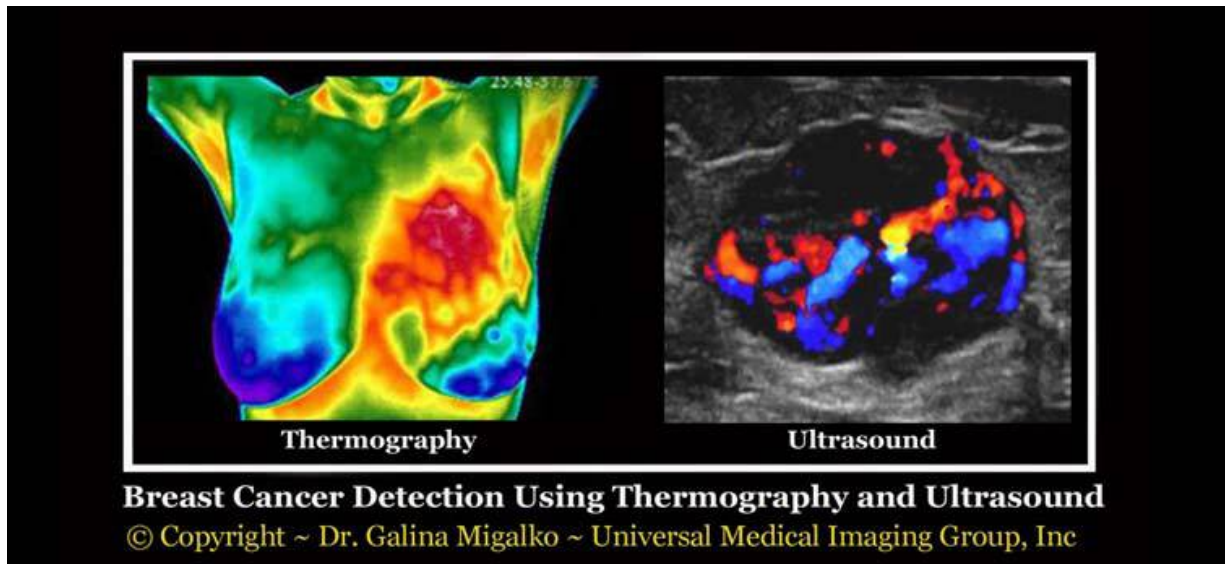
14) Protein g/dl

Venous blood: 72, Arterial blood: 74, Capillary blood: 73.7, Intracellular fluid: 68 and Interstitial fluid: 20.6

As deficiencies are corrected in the intracellular and interstitial fluids with key alkalizing nutritional treatments, patients see the difference in the improved interstitial pH and chemistry counts through follow-up tests using quantitative noninvasive 3-D FBBES. They also feel the difference physiologically and functionally with increased energy and vitality. [114,116,117]

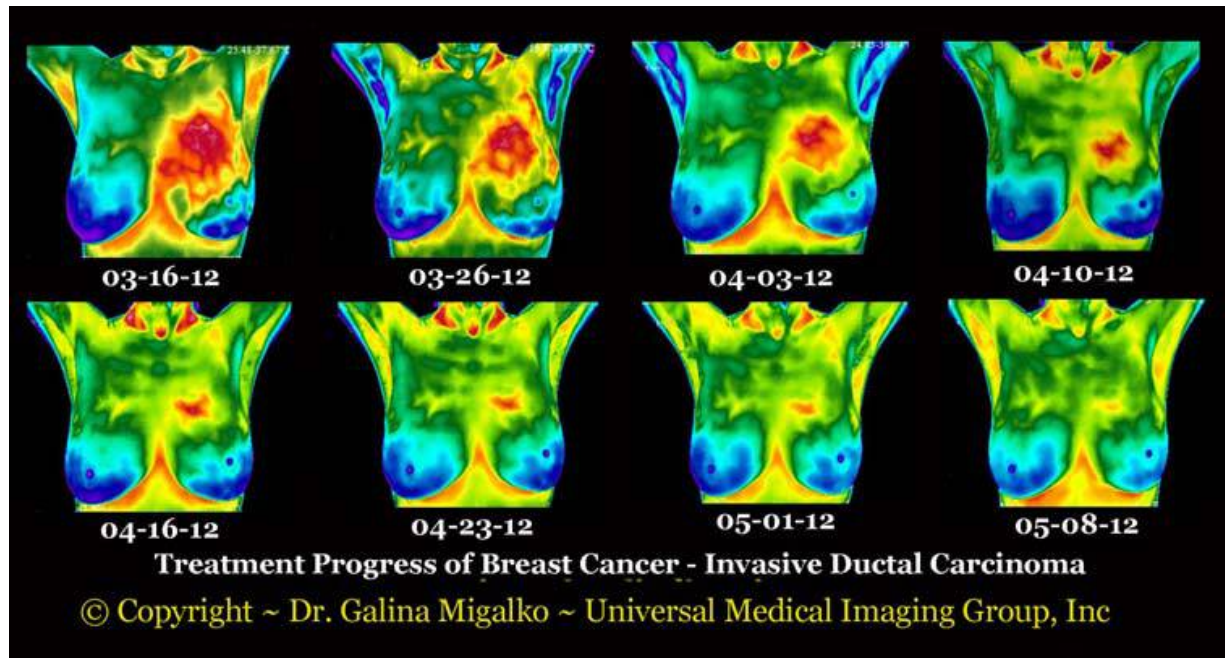
This is how I know proper alkalizing nutritional support in any cancerous condition is important in the prevention and treatment of cancer, the metastasis of cancer, and the shrinking of a cancerous cyst or mass without chemotherapy and-or radiation. The best part about these alkalizing nutritional treatments is they are helpful in most, if not in all cancerous conditions.[110, 111,112]

The following case study is with one of my patients who was diagnosed by biopsy with inflammatory ductal cell carcinoma who reversed her cancerous condition without chemotherapy, radiotherapy, and surgery.[114]



By using breast thermography and ultrasound also referred to as sonography for tumor location and size you can see the week by week thermography progress of a 14.2cm tumor in the left breast reduce to less than 2cm in 7

weeks of treatment using ANI protocol (as outlined in this article and in Chapter 11, pH Miracle revised and updated). (110,111,112,114)



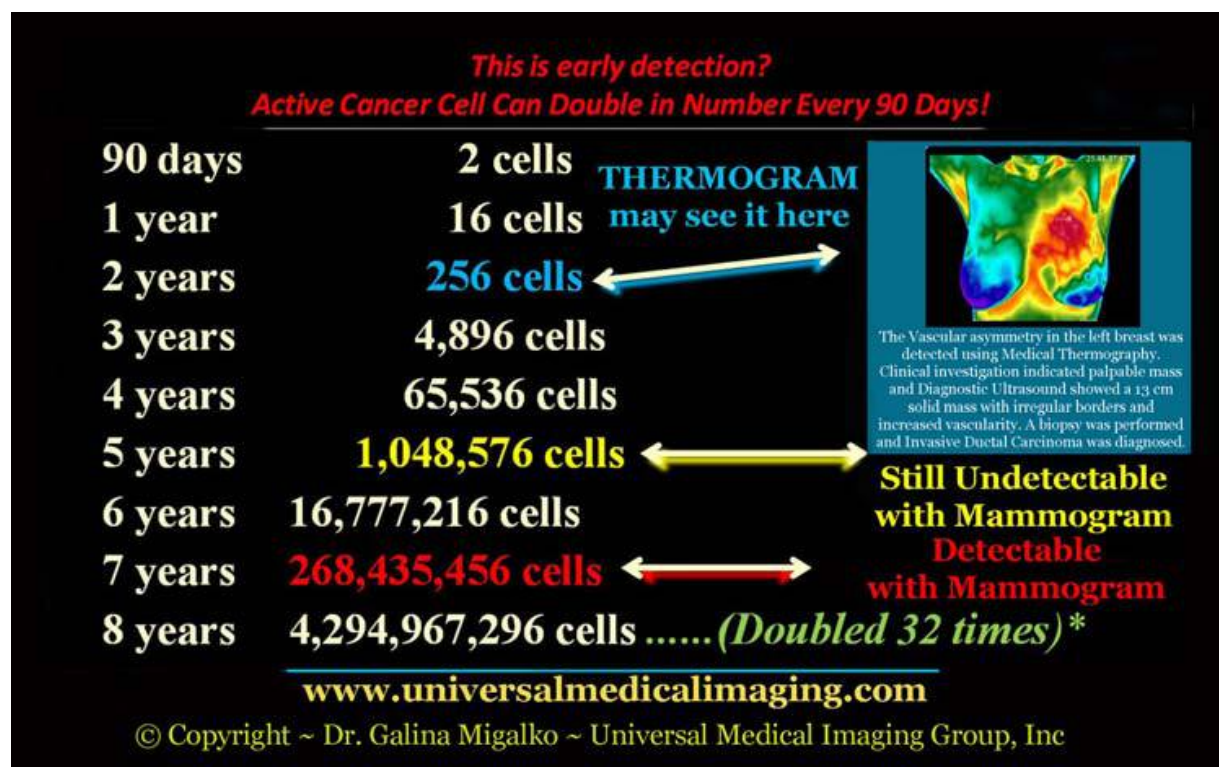
The safest, painless, non-invasive, affordable full body screening tests are a combination of a Medical Diagnostic Ultrasound and Thermography, which may give the Physician about 95% accuracy in detecting breast cancer.[114]

Full Body Thermography (FBT) is a physiological, non-invasive screening procedure that detects and records infrared heat emissions from the pre-cancerous or cancerous area, which can aid in the early detection of abnormal changes in body tissues, organ, and glands.[118] FBT offers information that no other procedure can provide. The procedure is based on the principle that chemical and blood vessel activity in both pre-cancerous or cancerous tissue, and the area surrounding a developing cancer, is almost always higher in temperature than in the normal tissue.

Since pre-cancerous and cancerous masses are highly metabolic tissues, they need an abundant supply of nutrients to maintain their growth. The cells release substances that stimulate the formation of new blood vessels (neoangiogenesis). This process results in an increase in surface temperatures of the affected tissue, organ, or gland.[118]

The most promising aspect of medical diagnostic FBT is its ability to spot abnormalities years before the tumor is seen on any other anatomical test. Since thermal imaging detects changes at the cellular level, this test can detect activity 8 to 10 years before any other test.[114,118,119,120] This makes it unique in that it affords the physician the opportunity to view changes before the actual formation of the cancerous tumor.

Studies have shown that by the time a tumor has grown sufficiently to be detectable by physical examination or mammography, it has been growing for about seven years—achieving more than 25 doublings of the malignant cell colony.[114,118,119,120,121] At 90 days there are two cells, at one year there are 16 cells, and at five years there are 1,048,576 cells—an amount that is still undetectable by a mammogram. Thermography has the ability to provide the patient with future risk assessment. If discovered, certain thermographic risk markers can warn the patient that she or he needs to work closely with their physician with regular checkups to monitor health. [114]



Full-body Ultrasound (FBU) is an anatomical, non-invasive, and painless screening test without ionized radiation. FBU uses sound waves to outline a part of the body. For this test, a small instrument called a transducer is

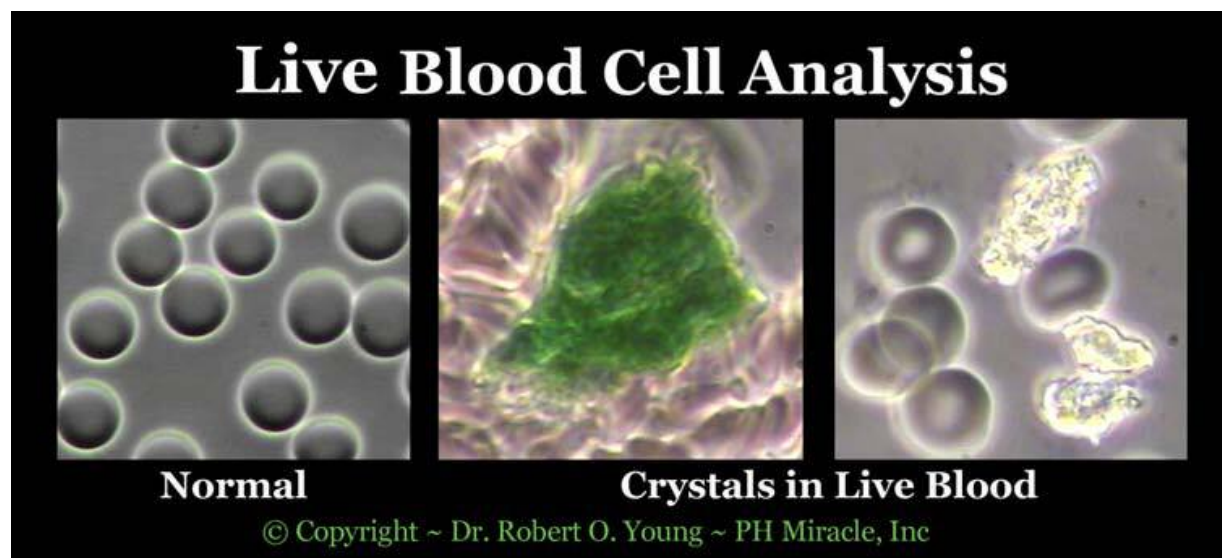
placed on the skin (which is often first lubricated with ultrasound gel) and emits sound waves off body tissues. The echoes are converted by a computer into an image that is displayed on a computer screen.

FBU imaging is “real-time,” meaning that it can show exactly what is happening in the tissue, organ, or gland at that moment: helping to distinguish between cysts (fluid-filled sacs) and solid masses; detect increased vascularity around or within the mass; and to see the shape, exact size, and location of the mass, cyst, calcification, or dilated mammary ducts.

These safe medical diagnostic tests can be done on early basis as a regular check up—or more often if a problem was detected with the FBBES and FBT to monitor the efficacy of the noninvasive alkalizing nutritional treatment progress.

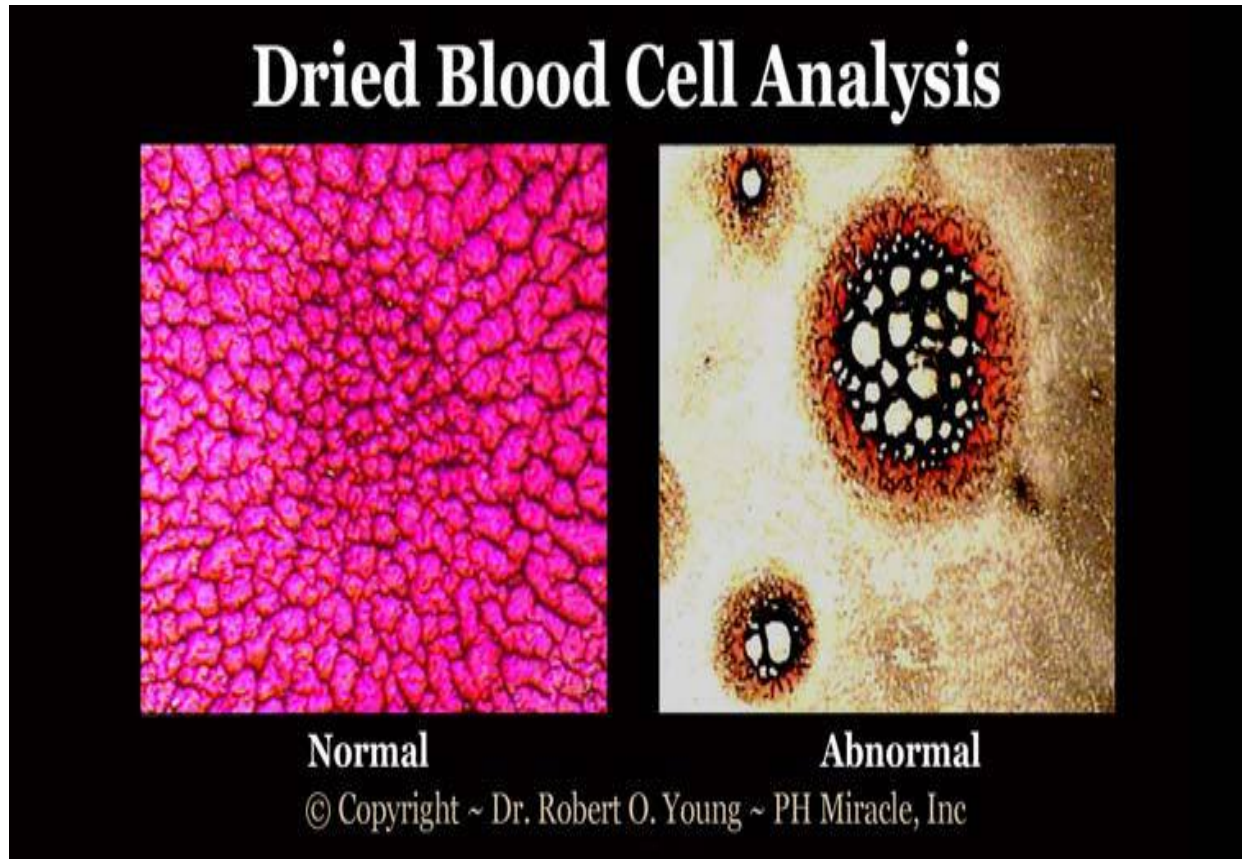
Non-Invasive Hematological Blood Tests

A live (LBA) and dried blood analysis (DBA) is used for detection and monitoring of dietary and metabolic dysfunction in the prevention of ALL sickness and disease, including cancer. [123]



The live blood phase contrast microscopy assessment and the dried blood brightfield mycotoxic oxidative stress assessment are two unique blood tests that are used as pre- screening tests combined with Diagnostic Medical Ultrasound (FBU), Thermography (FBT) and Bio- electro Scan (FBBES) to

monitor dietary and metabolic dysfunction—thereby taking the guesswork out of diet determination and the selection of an appropriate natural hygiene health and fitness protocol.[123,124,125]



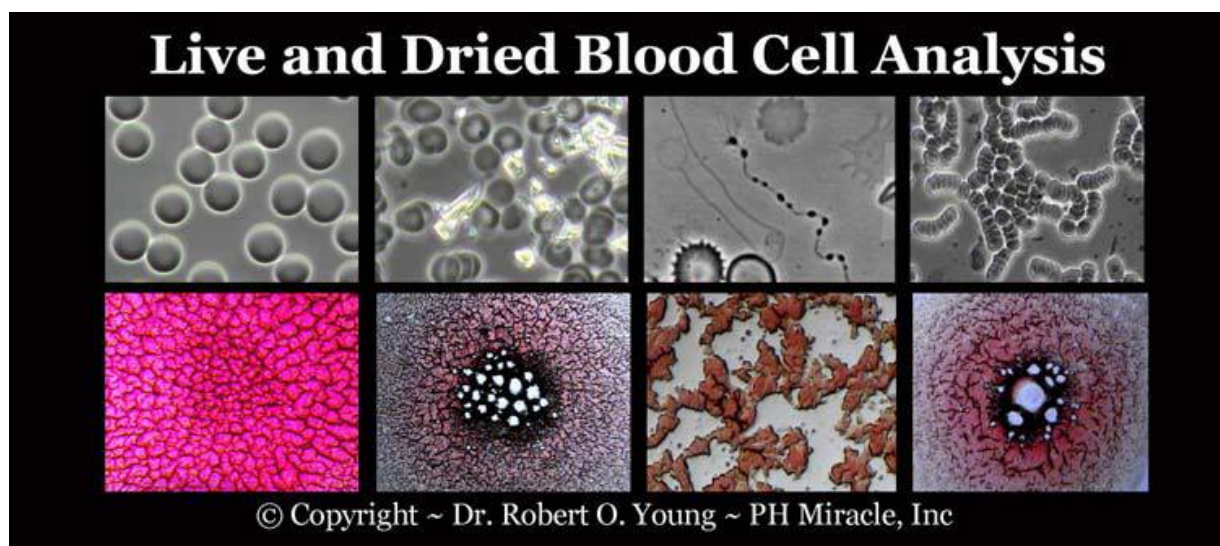
What are the benefits?

There are many benefits to having your live and dried blood analyzed. You can see how generally healthy you are, PH imbalances, indications of levels of toxicity, nutrient deficiency, free radical stress, the quality of your diet, how well any supplements may be working for you and how well your systems are working to detoxify your body. [124]

Most importantly, for many people they can see for themselves the dynamic activity going on inside their body for the first time. Many people begin to understand the impact of their diet and lifestyle on their body and begin to grasp the need to commit to taking care of their health.

How does it work?

Live blood analysis allows you to view the red and white blood cells in the blood, the platelets and the blood plasma. Imbalances seen in the blood will affect organs and tissues leading to malfunction and eventually illness. If our red blood cells are not perfectly shaped, with a proper structure, flexibility and fluidity their ability to travel around the body and do their job is severely compromised. This leads to tissue levels of oxygen and nutrients falling, which translates to low energy, fatigue and a general sense of feeling unwell as well as more serious problems. Similarly, dried blood analysis can show levels of oxidative stress and toxicity in the body. [124,125]



Based upon the observations I then recommend specific protocols to cleanse and rejuvenate your blood. This may include herbs, natural supplements and \detoxification protocols as well as simple lifestyle and dietary suggestions. [110,111,112]

A Live and Dried Blood Cell Prostate Cancer Case Study

- 1) Prostate cancer – 3 lesions
- 2) Hepatitis C
- 3) CMV
- 4) Arteriosclerotic plaque
- 5) High Bilirubin
- 6) High C-reactive protein
- 7) High cholesterol
- 8) High PSA

- 9) High Gleason score
- 10) Low testosterone

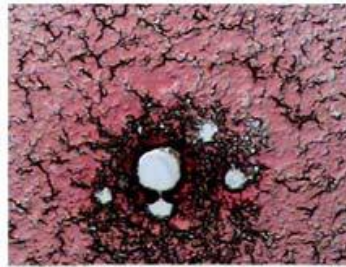
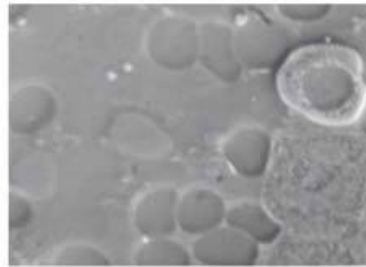
Duration of treatment: April 2012 to November 2014

The following are a few of the first pictures of LBA and DBA blood micrographs taken from the patient in April of 2012. The patterns of the LBA and DBA blood tests were consistent with prostate cancer showing several polymerized protein pools (PPP) in the center of the coagulated blood. [124]

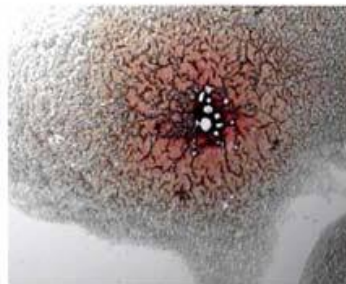
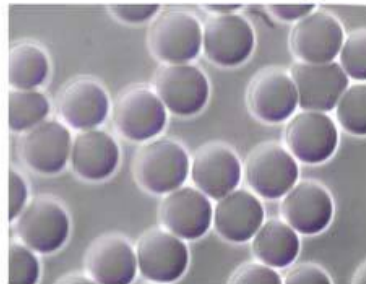
After 6 months of following the alkaline diet and lifestyle with Alkaline Nutritional Therapy (ANT) and RNT his LBA blood showed incredible improvement with normal healthy blood. The DBA blood showed a reduction in polymerized protein pools (PPP) in the center of the coagulated blood indicating improvement in the health of the prostate.

On November 2014 his live and dried blood shows no indications of malignancy. Live and dried blood showing the normal healthy profiles.

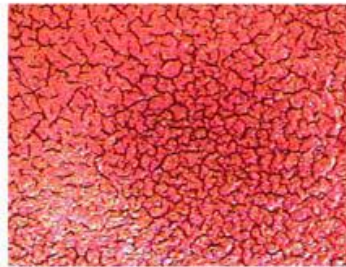
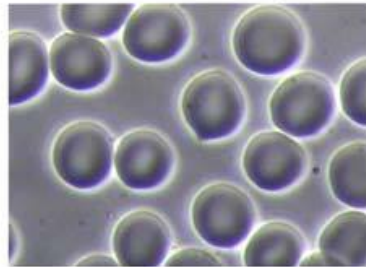
Live and Dried Blood Analysis Treatment Progress of Prostate Cancer



April 2012



September 2012



November 2014

© Copyright ~ Dr. Robert O. Young ~ PH Miracle, Inc

Results: October 2014 biopsy, MRI and blood tests showed that all conditions of prostate cancer with 3 lesions, Hepatitis C and Cytomegalovirus (CMV) were reversed.

Also, the current conventional blood report of November 2014, showed normal cholesterol, sclerotic plaque gone, normal bilirubin, normal C-reactive protein, normal PSA and normal Testosterone levels.

Summary

Early detection is critical for any cancerous condition, which includes self examination and safe, painless, non-invasive medical diagnostic. The early detection scans include a Full Body Bio-electro Scan (FBBES), Full Body Thermography (FBT), a Full Body Ultrasound (FBU) scan and a Live Blood Analysis(LBA) with a Dried Blood Analysis (DBA). All diagnostic scans are free from ionizing radiation and are coupled with a supportive alkalizing nutritional diet, Intravenous Nutritional Infusion (INI) and Rectal Nutritional Infusion (RNI) even if the patient is receiving chemotherapy and/or radiation,

Redness of the breast Breast Swelling or enlargement Pain or Itchiness of the breast

Thickening of the skin on the breast Swelling of the lymph nodes in the armpit or above/below the clavicle

Physiological changes (inflammation, lymphatic congestion, temperature changes) on Medical Diagnostic Thermography

Anatomical changes (mass, increased vascularity, calcification, dilated duct) on Medical Diagnostic Ultrasound

Early Detection, which includes Self Examination and Safe, Painless, Non-invasive Medical Diagnostic Ultrasound and Thermography Screenings with NO Radiation Saves Lives!

© Copyright ~ Dr. Galina Migalko ~ Universal Medical Imaging, Inc

I have found clinically that this non-invasive approach for any pre-cancerous or cancerous condition will save lives. Reversing an existing cancerous condition, preventing the risk of metastasis and improving the quality and quantity of life has been demonstrated in over 90 percent of all cases using this alkalizing lifestyle, diet, Intravenous Nutritional Infusions (INI) and

Rectal Nutritional Infusions (RNI) treatment therapy. [110,111,112,114,122,126].

References

- [1] Adams K.M, Lindel K.C., Kohlmier M., Zeisel S.H., “Status of nutrition education in medical schools.” Am J Clin Nutr. Author manuscript; available in PMC 2008 Jun 18. [2] Bruer RA, Schmidt RE, Chapel T. “Nutrition education for physicians: alternative federal roles for creating an improved system.” Macro International, Inc; Washington, DC: 1993. PB93-189074.
- [3] Davis CH. The report to Congress on the appropriate federal role in assuring access by medical students, residents, and practicing physicians to adequate training in nutrition. Public Health Rep. 1994;109:824–6. [PMC free article] [PubMed]
- [4] National Academy of Sciences . Nutrition education in U.S. medical schools. National Academy Press; Washington, DC: 1985.
- [5] Feldman EB. Educating physicians in nutrition—a view of the past, the present, and the future. Am J Clin Nutr. 1991;54:618–22. [PubMed]
- [6] Darer JD, Hwang W, Pham HH, Bass EB, Anderson G. More training needed in chronic care: a survey of US physicians. Acad Med. 2004;79:541–8. [PubMed]
- [7] Association of American Medical Colleges Medical School Graduation Questionnaire. All schools reports. 2004. Internet: <http://www.aamc.org/data/gq/allschoolsreports> (accessed 19 May 2005)
- [8] Torti F, Adams K, Edwards L, Lindell K, Zeisel S. Survey of nutrition education in U.S. medical schools—an instructor based analysis. Med Educ Online [serial online] 2001;6:8. Internet: <http://www.Med-Ed-Online.org>(accessed 19 May 2005)
- [9] Association of American Medical Colleges Curriculum directory. Internet: <http://services.aamc.org/currdir/start.cfm> (accessed 2 September 2004)
- [10] Weinsier RL, Boker JR, Brooks CM, et al. Priorities for nutrition content in a medical school curriculum: a national consensus of medical educators. Am J Clin Nutr. 1989;50:707–12. [PubMed]
- [11] Mihalyuk TV, Scott CS, Coombs JB. Self-reported nutrition proficiency is positively correlated with the perceived quality of nutrition training of family physicians in Washington State. Am J Clin Nutr. 2003;77:1330–6. [PubMed]
- [12] Kushner RF. Barriers to providing nutrition counseling by physicians: a survey of primary care practitioners. Prev Med. 1995;24:546–52. [PubMed]
- [13] Mihalyuk TV, Knopp RH, Scott CS, Coombs JB. Physician informational needs in providing nutritional guidance to patients. Fam Med. 2004;36:722–6. [PubMed]
- [14] Groos E, Walker L, Masters JR. Intravesical chemotherapy. Studies on the relationship between pH and cytotoxicity. Cancer. 1986;58(6):1199–1203. [PubMed]
- [15] Smith SR, Martin PA, Edwards RHT. Tumour pH and response to chemotherapy: an in vivo 31P magnetic resonance spectroscopy study in non-Hodgkin’s lymphoma. British Journal of Radiology. 1991;64(766):923–928. [PubMed]
- [16] Raghunand N, Gillies RJ. pH and chemotherapy. Novartis Foundation Symposium. 2001;240:199–211. [PubMed]
- [17] Raghunand N, He X, Van Sluis R, et al. Enhancement of chemotherapy by manipulation of tumour pH. British Journal of Cancer. 1999;80(7):1005–1011. [PMC free article] [PubMed]
- [18] Immunity, Inflammation, and Cancer
<http://www.sciencedirect.com/science/article/pii/S0092867410000607>
- [19] Inflammation: Gearing the journey to cancer
—http://www.uccs.edu/Documents/rmelamed/kundu_surh_2008_18485806.pdf
- [20] Researchers examine how BRD4 contributes to sustained presence of NF-kappa B in cancer cells – <http://www.news-medical.net/news/20130520/Researchersexaminehow-BRD4-contributes-to-sustained-presence-of-NF-kappa-B-in-cancer-cells.aspx>
- [21] The Epidermal Growth Factor Receptor: A Link Between Inflammation and Liver Cancer – <http://ebm.sagepub.com/content/234/7/713.abstract#target-1> - See more at: <http://envita.com/cancer/chronic-inflammation#sthash.1KCydZeZ.dpuf>
- [22] (Charles B Simone MD, NicoleL. Simone MD) “Antioxidants and other Nutrients Do Not Interfere With Chemotherapy or Radiation Therapy and Increase Kill and Survival.” [23] Nick Barker¹, Johan H. van Es¹, Jeroen Kuipers¹, Pekka Kujala², Maaïke van den Born¹, Miranda Cozijnsen¹, Andrea Haegerbarth¹, Jeroen Korving¹, Harry Begthel¹, Peter J. Peters² & Hans Clevers¹, “Identification of stem cells in small intestine and colon by marker gene Lgr5,” Nature 449, 1003-1007 (25 October 2007) | :10.1038/nature06196; Received 21 June 2007; Accepted 24 August 2007; Published online 14 October 2007. Hubrecht Institute, Uppsalalaan 8, 3584CT Utrecht, The Netherlands
The Netherlands Cancer Institute, Antoni van Leeuwenhoek Hospital, Plesmanlaan 121, 1066 CX Amsterdam, The Netherlands
- [24] Waugh A, Grant A. Anatomy and Physiology in Health and Illness. 10th edition. Philadelphia, Pa, USA: Churchill Livingstone Elsevier; 2007.
- [25] University, Birmingham oAa. Oceans reveal further impacts of climate change. ScienceDaily, 2010.
- [26] Hoegh-Guldberg O, Mumby PJ, Hooten AJ, et al. Coral reefs under rapid climate change and ocean acidification. Science. 2007;318(5857):1737–1742. [PubMed]
- [27] Dam-ampai SO J, Nilnond C. Effect of cattle manure and dolomite on soil properties and plant growth in acid upland soils. Songklanakarin Journal of Science and Technolohg. 2005;27(supplement 3):727–737.
- [28] Ströhle A, Hahn A, Sebastian A. Estimation of the diet-dependent net acid load in 229 worldwide historically studied hunter-gatherer societies. American Journal of Clinical Nutrition. 2010;91(2):406–412. [PubMed]
- [29] Sebastian A, Frassetto LA, Sellmeyer DE, Merriam RL, Morris RC., Jr. Estimation of the net acid load of the diet of ancestral preagricultural Homo sapiens and their hominid ancestors. American Journal of Clinical Nutrition. 2002;76(6):1308–1316.

- [PubMed] [30] Frassetto L, Morris, Jr. R.C. RC, Jr., Sellmeyer DE, Todd K, Sebastian A. Diet, evolution and aging—the pathophysiologic effects of the post-agricultural inversion of the potassium-to-sodium and base-to-chloride ratios in the human diet. *European Journal of Nutrition*. 2001;40(5):200–213. [PubMed]
- [31] Konner M, Boyd Eaton S. Paleolithic nutrition: twenty-five years later. *Nutrition in Clinical Practice*. 2010;25(6):594–602. [PubMed]
- [32] Lindeman RD, Goldman R. Anatomic and physiologic age changes in the kidney. *Experimental Gerontology*. 1986;21(4-5):379–406. [PubMed]
- [33] Reddy ST, Wang CY, Sakhaee K, Brinkley L, Pak CY. Effect of low-carbohydrate high-protein diets on acid-base balance, stone-forming propensity, and calcium metabolism. *American Journal of Kidney Diseases*. 2002;40(2):265–274. [PubMed] [34] Groos E, Walker L, Masters JR. Intravesical chemotherapy. Studies on the relationship between pH and cytotoxicity. *Cancer*. 1986;58(6):1199–1203. [PubMed] [35] Smith SR, Martin PA, Edwards RHT. Tumour pH and response to chemotherapy: an in vivo ³¹P magnetic resonance spectroscopy study in non-Hodgkin's lymphoma. *British Journal of Radiology*. 1991;64(766):923–928. [PubMed]
- [36] Raghunand N, Gillies RJ. pH and chemotherapy. *Novartis Foundation Symposium*. 2001;240:199–211. [PubMed]
- [37] Raghunand N, He X, Van Sluis R, et al. Enhancement of chemotherapy by manipulation of tumour pH. *British Journal of Cancer*. 1999;80(7):1005–1011. [PMC free article] [PubMed]
- [38] Louis Pasteur (1879) *Studies on fermentation: The diseases of beer, their causes, and the means of preventing them*. Macmillan Publishers.
- [39] *Modern History Sourcebook: Louis Pasteur (1822–1895): Physiological theory of fermentation, 1879*. Translated by F. Faulkner, D.C. Robb.
- [40] Warburg, Otto, “On the Origin of Cancer Cells,” *Science*, February 1956, Vol. 123, No. 3191
- [41] Witting, Rainer and Coy, Johannes, “The Role of Glucose Metabolism and Glucose Associated Signaling in Cancer:” *Perspectives in Medicinal Chemistry*, 2007; 1:64-82. Pp. 2; cited PubMed, <http://www.ncbi.nlm.nih.gov/pmc/articles/PMC2754915>
- [42] Cancer: “The Mechanism Involved and a High pH Therapy,” 1978 papers of A. Keith Brewer, Ph.D. & co-authors, Copyright A. Keith Brewer Foundation, 325 N. Central Ave., Richland Center, Wis, 53581.
- [43] “Distinct E-cadherin-based complexes regulate cell behaviour through miRNA processing or Src and p120 catenin activity.” *Nature Cell Biology* 17, 1145–1157 doi:10.1038/ncb3227
- Antonis Kourtidis,
Siu P. Ngok,
Pamela Pulimeno,
Ryan W. Feathers,
Lomeli R. Carpio,
Tiffany R. Baker,
Jennifer M. Carr,
Irene K. Yan,
Sahra Borges,
Edith A. Perez,
Peter Storz,
John A. Copland,
Tushar Patel,
E. Aubrey Thompson,
Sandra Citi
& Panos Z. Anastasiadis
- Affiliations
Contributions
Corresponding author
- [44] (Medscape article) “One Size Fits All Drug Dosing Give Suboptimal Results” [45] Holly G. Prigerson, PhD1,2; Yuhua Bao, PhD3; Manish A. Shah, MD4; M. Elizabeth Paulk, MD6; Thomas W. LeBlanc, MD, MA5; Bryan J. Schneider, MD7; Melissa M. Garrido, PhD8,9; M. Carrington Reid, MD, PhD2; David A. Berlin, MD10; Kerin B. Adelson, MD13; Alfred I. Neugut, MD, PhD11,12; Paul K. Maciejewski, PhD1,14[+] Author Affiliations, “Chemotherapy Use, Performance Status, and Quality of Life at the End of Life.” *JAMA Oncol*. 2015;1(6):778-784. doi:10.1001/jamaoncol.2015.2378.
- [46] *Cancer Treatment & Survivorship, Facts & Figures, Estimated Numbers of Cancer Survivors by State as of January 1, 2014*. <http://www.cancer.org/acs/groups/content/@research/documents/document/acspe-042801.pdf>
American Cancer Society Inc. 250 Williams Street, NW, Atlanta, GA 30303-1002, 404-320-3333
- [47] *Scand J Gastroenterol*. 1992 Oct;27(10):829-36, “Measurement of gastric bicarbonate secretion in the human stomach: different methods produce discordant results.” Odes HS1, Hogan DL, Steinbach JH, Ballesteros MA, Koss MA,
- [48] A.F. Basile, A.C. Ahyl, L.C. Feldman, J.R. Williams, P.M. Mooney, “Effects of sodium ions on trapping and transport of electrons at the SiO₂/4H-SiC interface.” *J. Appl. Phys.* 115, 034502 (2014); <http://dx.doi.org/10.1063/1.4861646>, Department of Physics, University of Bologna, Bologna 40127, Italy. Electronic mail: afbasile@gmail.com. [49] Campling BG, Sarda IR, Baer KA, Pang SC, Baker HM, Lofters WS, Flynn TG. Secretion of atrial natriuretic peptide and vasopressin by small cell lung cancer. *Cancer*. 1995;75:2442-51
- [50] Aronson PS, Giebisch G. Effects of pH on potassium: new explanations for old observations. *J Am Soc Nephrol* 2011; 22:1981.
- [51] Sterns RH, Cox M, Feig PU, Singer I. Internal potassium balance and the control of the plasma potassium concentration. *Medicine (Baltimore)* 1981; 60:339.
- [52] Adrogué HJ, Madias NE. Changes in plasma potassium concentration during acute acid-base disturbances. *Am J Med* 1981; 71:456.

- [53] Adrogué HJ, Madias NE. PCO₂ and [K⁺]_p in metabolic acidosis: certainty for the first and uncertainty for the other. *J Am Soc Nephrol* 2004; 15:1667.
- [54] Magner PO, Robinson L, Halperin RM, et al. The plasma potassium concentration in metabolic acidosis: a re-evaluation. *Am J Kidney Dis* 1988; 11:220.
- [55] Wiederseiner JM, Muser J, Lutz T, et al. Acute metabolic acidosis: characterization and diagnosis of the disorder and the plasma potassium response. *J Am Soc Nephrol* 2004; 15:1589.
- [56] Fulop M. Serum potassium in lactic acidosis and ketoacidosis. *N Engl J Med* 1979; 300:1087.
- [57] Graber M. A model of the hyperkalemia produced by metabolic acidosis. *Am J Kidney Dis* 1993; 22:436.
- [58] Adrogué HJ, Chap Z, Ishida T, Field JB. Role of the endocrine pancreas in the kalemic response to acute metabolic acidosis in conscious dogs. *J Clin Invest* 1985; 75:798.
- [59] Szyłman P, Better OS, Chaimowitz C, Rosler A. Role of hyperkalemia in the metabolic acidosis of isolated hypoaldosteronism. *N Engl J Med* 1976; 294:361.
- [60] Altenberg GA, Aristimuño PC, Amorena CE, Taquini AC. Amiloride prevents the metabolic acidosis of a KCl load in nephrectomized rats. *Clin Sci (Lond)* 1989; 76:649. [61] Rose BD, Post TW. *Clinical Physiology of Acid-Base and Electrolyte Disorders*, 5th ed, McGraw-Hill, New York 2001. p.347.
- [62] DuBose TD Jr, Good DW. Effects of chronic hyperkalemia on renal production and proximal tubule transport of ammonium in rats. *Am J Physiol* 1991; 260:F680. [63] DuBose TD Jr, Good DW. Chronic hyperkalemia impairs ammonium transport and accumulation in the inner medulla of the rat. *J Clin Invest* 1992; 90:1443.
- [64] Good DW. Ammonium transport by the thick ascending limb of Henle's loop. *Annu Rev Physiol* 1994; 56:623.
- [65] Attmane-Elakeb A, Mount DB, Sibella V, et al. Stimulation by in vivo and in vitro metabolic acidosis of expression of rBSC-1, the Na⁺-K⁺-(NH₄⁺)-2Cl⁻ cotransporter of the rat medullary thick ascending limb. *J Biol Chem* 1998; 273:33681.
- [66] Bourgeois S, Meer LV, Wootla B, et al. NHE4 is critical for the renal handling of ammonia in rodents. *J Clin Invest* 2010; 120:1895.
- [67] Sabatini S, Kurtzman NA. The maintenance of metabolic alkalosis: factors which decrease bicarbonate excretion. *Kidney Int* 1984; 25:357.
- [68] COOKE RE, SEGAR WE, CHEEK DB, et al. The extrarenal correction of alkalosis associated with potassium deficiency. *J Clin Invest* 1952; 31:798.
- [69] Carlisle EJ, Donnelly SM, Vasuvattakul S, et al. Glue-sniffing and distal renal tubular acidosis: sticking to the facts. *J Am Soc Nephrol* 1991; 1:1019.
- [70] Lawrence Appel, MD, MPH, professor of medicine, epidemiology, and international health, Johns Hopkins Medical Institutions.
- [71] Marla Heller, MS, RD, author, *The DASH Diet Action Plan*, Amidon Press, 2007. [72] U.S. Department of Agriculture: "Report of the Dietary Guidelines Advisory Committee Report on the Dietary Guidelines for Americans, 2010: Sodium, Potassium, and Water." Appel, L. *The New England Journal of Medicine*, April 17, 1997; vol 336: pp 1117-1124. [73] *Rethinking Cancer* - http://www.rethinkingcancer.org/resources/magazinearticles/18_7-8/potassium.php
- [74] "Calcium supplementation may attenuate the hyperproliferation and hyperplasia induced in the mouse colon by a Western-style diet."
- Click here to read the entire abstract
- Pubmed Data : Carcinogenesis. 1995 Nov;16(11):2685-9. PMID: 7586187 Article Published Date : Nov 01, 1995 Study Type : Animal Study
- Additional Links
- Substances : Calcium : CK(232) : AC(35) Diseases : Colon Cancer : CK(895) : AC(233), Western-Style Diet Induced Toxicity : CK(6) : AC(3) Pharmacological Actions : Antiproliferative : CK(1061) : AC(775)
- [75] "Magnesium intake and colorectal tumor risk: a case-control study and meta-analysis." Petra A Wark, Rosa Lau, Teresa Norat, and Ellen Kampman, *The American Journal of Clinical Nutrition* September 2012
- [76] L C Costello¹, P Feng¹, B Milon¹, M Tan² and R B Franklin¹, *Prostate Cancer and Prostatic Diseases* (2004) 7, 111–117. doi:10.1038/sj.pcan.4500712, "Role of zinc in the pathogenesis and treatment of prostate cancer: critical issues to resolve."
- ¹Department of Biomedical Sciences, Dental School, University of Maryland, Baltimore, Maryland, USA
- ²Division of Biostatistics, Greenebaum Cancer Center, University of Maryland, Baltimore, Maryland, USA
- Correspondence: LC Costello, Department of Biomedical Sciences, Dental School/University of Maryland, 666 West Baltimore Street, Baltimore, MD 21201, USA. E-mail: lcc@dental.umaryland.edu
- Received 17 December 2003; Revised 22 January 2004; Accepted 2 February 2004. [77] Bjelakovic G, Nikolova D, Gluud LL, et al. Antioxidant supplements for prevention of mortality in healthy participants and patients with various diseases. *Cochrane.Database.Syst.Rev.* 2012;3:CD007176. - See more at: <http://ww5.komen.org/BreastCancer/VitaminE.html#sthash.cTdPRkTA.dpuf> [78] Chalasani N, Younossi Z, Lavine JE, et al. The diagnosis and management of non-alcoholic fatty liver disease: Practice guideline by the American Association for the Study of Liver Diseases, American College of Gastroenterology, and the American Gastroenterological Association. *Am.J.Gastroenterol.* 2012;107(6):811-826. - See more at: <http://ww5.komen.org/BreastCancer/VitaminE.html#sthash.cTdPRkTA.dpuf> [79] Cortes-Jofre M, Rueda JR, Corsini-Munoz G, et al. Drugs for preventing lung cancer in healthy people. *Cochrane.Database.Syst.Rev.* 2012;10:CD002141. - See more at: <http://ww5.komen.org/BreastCancer/VitaminE.html#sthash.cTdPRkTA.dpuf> 2386-z. Epub 2014 Jan 23., "High-dose vitamin B1 reduces proliferation in cancer cell lines analogous to dichloroacetate." Hanberry BS1, Berger R, Zastre JA.
- [81] Bareford L M, Avaritt B R, Ghandehari H, Nan A, Swaan P W (2013), "Riboflavin targeted polymer conjugates for breast tumor delivery." *Pharm Res*, 30, 1799-812. [82] Ainiwaer J, Tuerhong A, Hasim A, et al (2013), "Association of the plasma riboflavin levels and riboflavin transporter (C20orf54) gene statuses in Kazak esophageal squamous cell carcinoma patients." *Mol Biol Rep* 40, 3769-75.
- [83] Bassett J K, Severi G, Hodge A M, et al (2013), "Dietary intake of B vitamins and methionine and colorectal cancer risk." *Nutr*

- Cancer, 65, 659-67.
- [84] Powers HJ (2003). Riboflavin (vitamin B-2) and health. *Am J Clin Nutr*, 77, 1352-60 [85] Chaves Neto A H, Pelizzaro-Rocha K J, Fernandes M N, Ferreira- Halder C V (2014). Antitumor activity of irradiated riboflavin on human renal carcinoma cell line 786-O. *Tumour Biol*.
- [86] Powers HJ (2005). Interaction among folate riboflavin genotype and cancer with reference to colorectal and cervical cancer. *J Nutr*, 135, 2960-66
- [87] *Nutr Cancer*. 2003;46(2):110-8, "Niacin and carcinogenesis." Kirkland JB1. [88] Zhang SM, Moore SC, Lin J, et al (2006), "Folate vitamin B6 multivitamin supplements and colorectal cancer risk in women." *Am J Epidemiol*, 163, 108-115 [89] Ma E, Iwasaki M, Kobayashi M, et al (2009), "Dietary intake of folate vitamin B2 vitamin B6 vitamin B12 genetic polymorphism of related enzymes and risk of breast cancer: a case-control study in Japan." *Nutr Cancer*, 61, 447-456.
- [90] *Nutr Cancer*. 2003;46(2):110-8, "Niacin and carcinogenesis." Kirkland JB1. [91] Cameron E, Pauling L (October 1976). "Supplemental ascorbate in the supportive treatment of cancer: Prolongation of survival times in terminal human cancer". *PNAS* 73 (10): 3685–3689. Bibcode:1976PNAS...73.3685C. doi:10.1073/pnas.73.10.3685. PMC 431183. PMID 1068480.
- [92] Cabanillas, F (2010). "Vitamin C and cancer: what can we conclude—1,609 patients and 33 years later?". *Puerto Rico health sciences journal* 29 (3): 215–7. PMID 20799507. edit
- [93] Review: there is a consistently strong inverse correlations with solar UVB for 15 types of cancers, *Anticancer Res*. 2012 Jan ;32(1):223-36. PMID: 22213311, Substances : Vitamin D : CK(1682) : AC(238) Diseases : Bladder Cancer : CK(186) : AC(60), Breast Cancer : CK(2372) : AC(660), Cervical Cancer : CK(378) : AC(69), Colon Cancer : CK(895) : AC(233), Colorectal Cancer : CK(877) : AC(321), Endometrial Cancer : CK(269) : AC(45), Esophageal Cancer : CK(328) : AC(55), Hodgkin Lymphoma : CK(53) : AC(7), Lung Cancer : CK(496) : AC(198), Non-Hodgkin Lymphoma : CK(525) : AC(67), Ovarian Cancer : CK(154) : AC(58), Pancreatic Cancer : CK(530) : AC(168), Renal Cancer : CK(25) : AC(4), Vulvar Cancer : CK(52) : AC(4), Therapeutic Actions : Sunlight exposure : CK(432) : AC(39), Pharmacological Actions : Chemopreventive : CK(1528) : AC(382) [94] "High dose folic acid supplementation is associated with a significant reduction in the recurrence of colon cancers" *World J Gastroenterol*. 2008 Jul 28;14(28):4492-8. PMID: 18680228
- [95] Guan D, Xu Y, Yang M, Wang H, Wang X, Shen Z. N-acetyl cysteine and penicillamine induce apoptosis via the ER stress response-signaling pathway. *Mol Carcinog*. 2010 Jan;49(1):68-74.
- [96] Li J, Tu HJ, Dai G, et al. N-acetyl cysteine inhibits human signet ring cell gastric cancer cell line (SJ-89) cell growth by inducing apoptosis and DNA synthesis arrest. *Eur J Gastroenterol Hepatol*. 2007 Sep;19(9):769-74.
- [97] Yang J, Su Y, Richmond A. Antioxidants tiron and N-acetyl-L-cysteine differentially mediate apoptosis in melanoma cells via a reactive oxygen species-independent NF-kappaB pathway. *Free Radic Biol Med*. 2007 May 1;42(9):1369-80.
- [98] Krasnowska EK, Pittaluga E, Brunati AM, et al. N-acetyl-L-cysteine fosters inactivation and transfer to endolysosomes of c-Src. *Free Radic Biol Med*. 2008 Dec 1;45(11):1566-72. [99] Reliene R, Pollard JM, Sobol Z, Trouiller B, Gatti RA, Schiestl RH. N-acetyl cysteine protects against ionizing radiation-induced DNA damage but not against cell killing in yeast and mammals. *Mutat Res*. 2009 Jun 1;665(1-2):37-43.
- [100] Balansky R, Ganchev G, Ilcheva M, Steele VE, De Flora S. Prevention of cigarette smoke-induced lung tumors in mice by budesonide, phenethyl isothiocyanate, and N-acetyl cysteine. *Int J Cancer*. 2010 Mar 1;126(5):1047-54.
- [101] Nishikawa-Ogawa M, Wanibuchi H, Morimura K, et al. N-acetyl cysteine and S-methylcysteine inhibit MeIQx rat hepatocarcinogenesis in the post-initiation stage. *Carcinogenesis*. 2006 May;27(5):982-8.
- [102] Van Schooten FJ, Besaratinia A, De Flora S, et al. Effects of oral administration of N-acetyl-L-cysteine: a multi-biomarker study in smokers. *Cancer Epidemiol Biomarkers Prev*. 2002 Feb;11(2):167-75.
- [103] Ponz de Leon M, Roncucci L. Chemoprevention of colorectal tumors: role of lactulose and of other agents. *Scand J Gastroenterol Suppl*. 1997;222:72-5. [104] Estensen RD, Levy M, Klopp SJ, et al. N-acetyl cysteine suppression of the proliferative index in the colon of patients with previous adenomatous colonic polyps. *Cancer Lett*. 1999 Dec 1;147(1-2):109-14.
- [105] Cascinu S, Cordella L, Del Ferro E, et al., "Neuroprotective effect of reduced glutathione on cisplatin-based chemotherapy in advanced gastric cancer: a randomized double-blind placebo-controlled study." *J Clin Oncol*. 1995; 13:26-32.
- [106] Hercbergs A, Brok-Simoni F, Holtzman F, et al., "Erythrocyte glutathione and tumor response to chemotherapy." *Lancet*. 1992; 339:1074-1076.
- [107] Schmidinger M, Budinsky AC, Wenzel C, et al., "Glutathione in the prevention of cisplatin induced toxicities. A prospectively randomized pilot trial in patients with head and neck cancer and non small cell lung cancer." *Wien Klin Wochenschr*. 2000; 112:617-623.
- [108] Smyth JF, Bowman A, Perren T, et al., "Glutathione reduces the toxicity and improves quality of life of women diagnosed with ovarian cancer treated with cisplatin: results of a double-blind, randomized trial." *Ann Oncol*. 1997; 8:569-573.
- [109] Leon Schlossberg, George D. Zuidema, *The Johns Hopkins Atlas of Human Functional Anatomy*. <https://books.google.com/books?isbn=0801856523>. Johns Hopkins University. School of Medicine - 1997.
- [110] Robert O. Young, Ph.D., D.Sc., ND and Shelley Redford Young, LMT, "The pH Miracle revised and updated," Hachett Publishing, Boston, USA, June, 2010. [111] Robert O. Young, Ph.D., D.Sc., ND and Shelley Redford Young, LMT, "The pH Miracle for Cancer," Hikari Omni Publishing, Valley Center, California, September, 2015. [112] Robert O. Young, Ph.D., D.Sc., ND, Shelley Redford Young, LMT and Matt Traverso, "Reverse Cancer Now," Hikari Omni Publishing, Valley Center, California, July, 2014. [113] Morgan G1, Ward R, Barton M., *Clin Oncol (R Coll Radiol)*. 2004 Dec;16(8):549-60. "The contribution of cytotoxic chemotherapy to 5-year survival in adult malignancies." *Clin Oncol (R Coll Radiol)*. 2004 Dec;16(8):549-60.
- [114] Galina Migalko, MD, ND, Universal Medical Imaging Group, Valley Village, California, www.universalmedicalimaging.com
- [115] National Institute of Health, <http://www.cancer.gov/about-cancer/diagnosisstaging/staging/staging-fact-sheet>
- [116] Reference Studies: Niels Fough-Anderson, Burton M, Attura, Bella T. Attura, Ole Siggard-Andersen, *Clinical Chemistry*, 41/10, 1522-1525, (1995)
- [117] Gilariyi M., Bcriyi C., Fekete J, Ikriyi K., Kovach AGB, "Ion Concentration in Subcutaneous Interstitial Fluid Measured versus Expected Values." *AMJ of Physiology* 1988.
- [118] Loughmiller JA1, Spire MF, Dritz SS, Fenwick BW, Hosni MH, Hogge SB."Relationship between mean body surface

temperature measured by use of infrared thermography and ambient temperature in clinically normal pigs and pigs inoculated with *Actinobacillus pleuropneumoniae*." *Am J Vet Res.* 2001 May;62(5):676-81 [119] Comparison of the Performance of Screening Mammography, Physical Examination, and Breast US and Evaluation of Factors that Influence Them: An Analysis of 27,825 Patient Evaluations Thomas M. Kolb, MD, Jacob Lichy, MD, and Jeffrey H. Newhouse, MD
From 222 E 68th St, New York, NY 10021 (T.M.K., J.L.) and Department of Radiology, Columbia-Presbyterian Medical Center, New York, NY (T.M.K., J.H.N.). From the 1998 RSNA scientific assembly. Received October 11, 2001; revision requested December 5; final revision received April 11, 2002; accepted April 18. Address correspondence to T.M.K. (e-mail: tkolb@panix.com).

[120] Gotzsche, P. and Olsen, O., "Is Screening for Breast Cancer with Mammography Justifiable?" *The Lancet*, vol. 355, no. 9198 (Jan. 8, 2000), pp. 129-34; Gotzsche, P. and Olsen, O., *Cochrane Review on Screening for Breast Cancer with Mammography*, *The Lancet*, vol. 358, no. 9290 (Oct. 20, 2001), pp. 1340-42.

[121] Derenzini M, Sirri V, Trerè D, Ochs RL, "The quantity of nucleolar proteins nucleolin and protein B23 is related to cell doubling time in human cancer cells." "Centro di Patoloand protein B23 is related to cell doubling time in human cancer cells." "Centro di Patolo 502]

Journal Article, Research Support, Non-U.S. Gov't, Research Support, U.S. Gov't, [122] Ariosto S. Silva¹, Jose A. Yunes¹, Robert J. Gillies², and Robert A. Gatenby², "The Potential Role of Systemic Buffers in Reducing Intratumoral Extracellular pH and AcidMediated Invasion."

¹Laboratório de Biologia Molecular, Centro Infantil Boldrini, Campinas, Sao Paulo, Brazil and ²Departments of Radiology and Integrative Mathematical Oncology, Moffitt Cancer Center, Tampa, Florida

Requests for reprints: Robert A. Gatenby, Department of Radiology, Moffitt Cancer Center, 12902 Magnolia Drive, Tampa, FL 33612. Phone: 813-745-2843; Fax: 813-745-6070; E-mail:Robert.Gatenby@moffitt.org.

[123] Robert O. Young, Ph.D., D.Sc., ND, and Shelley Redford Young, LMT, "Sick and Tired, Reclaim Your Inner Terrain,"

Woodland Publishing, Orem, Utah, July, 1999. [124] Robert O. Young, Ph.D., D.Sc., ND, "Pathological Blood Coagulation." Hikari Omni Publishing, Valley Center, California, July, 1999.

[125] An Evaluation of the Bolen Test as a Screening Test for Malignancy. Bray O. Hawk, George E. Thoma and John J. Inkley *Cancer Res* 1951;11:157-160.

[126] Robey IF, Baggett BK, Kirkpatrick ND, Roe DJ, Dosesco J, Sloane BF, Hashim AI, Morse DL, Raghunand N, Gatenby RA, Gillies RJ, "Bicarbonate increases tumor pH and inhibits spontaneous metastases." *Cancer Res.* 2009 Mar 15;69(6):2260-8. Epub 2009 Mar 10. Arizona Cancer Center, University of Arizona, Tucson, Arizona, USA

- See more at: www.phoreveryoung.wordpress.com

The Cure for Cancer? That's an easy question to answer! The Cure for Cancer is Found in its Prevention NOT in its Treatment! - Dr. Robert O. Young

Do you know what rotten apples, grapefruit or bananas look like? If you do then you know what cancer cells look like. Cancer cells are nothing more than healthy cells that are spoiling because of a compromised environment! Look at the picture below and you will see colorized cancerous body cells rotting in their toxic acidic environment. What compromises the internal environment of a human body that causes body cells to begin spoiling and rotting? The answer is simple! The body's build-up of acidic metabolic and dietary waste that has not been properly eliminated through the four channels of elimination - urination, defecation, respiration and perspiration!

Cancer is not a noun but an adjective that describes what is happening to body cells in an acidic environment due to an acidic lifestyle and diet. www.phoreveryoung.com To learn more about Dr. Robert O. Young go to:

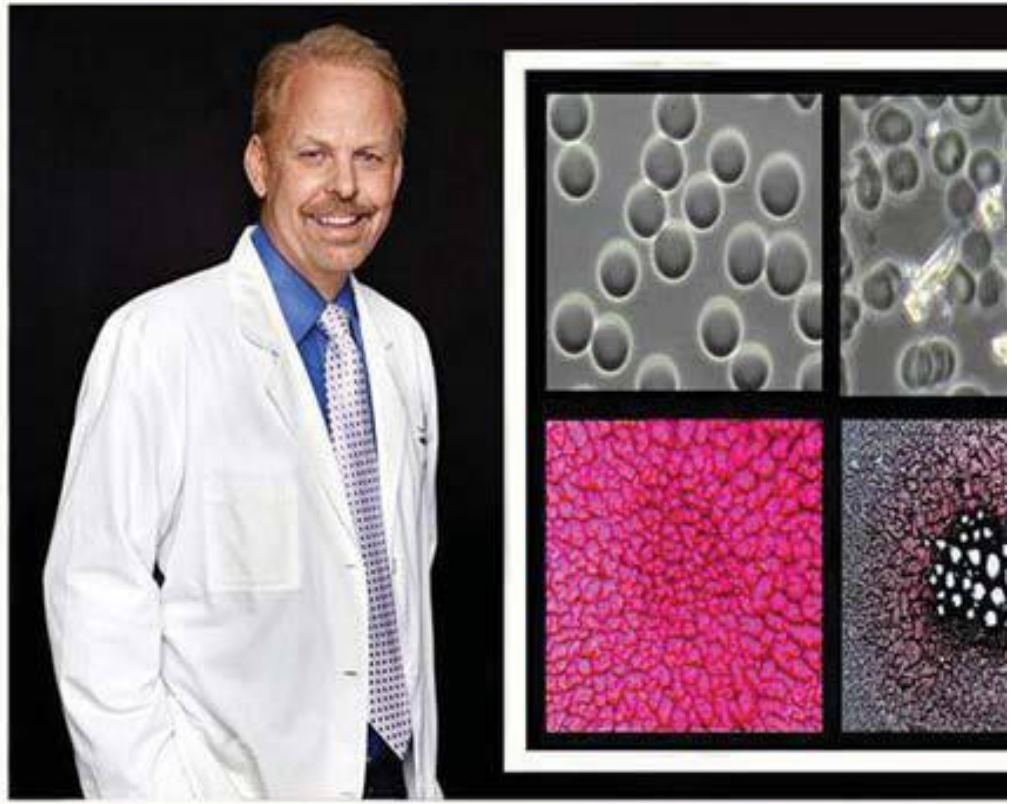
<https://www.linkedin.com/in/drrobertoyoung>

To read more of Dr. Young's articles go to: www.phoreveryoung.wordpress.com To join Dr. Young on Twitter go to: @drrobertoyoung

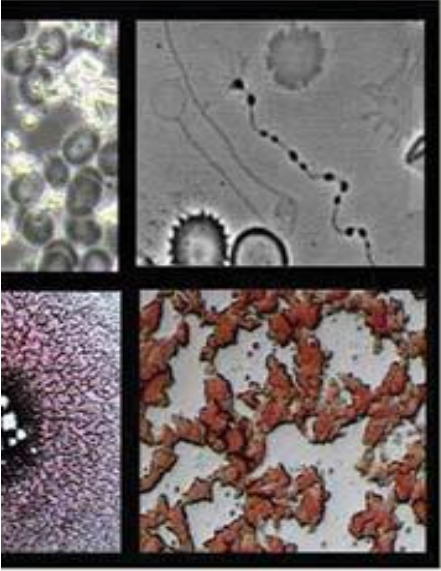
To watch more videos on YouTube go to: <https://www.youtube.com/user/pHMiracleCenter> Join Dr. Young on Facebook at: The PH Miracle Medical Association or The pH Miracle To purchase Dr. Young's books or nutritional products go to: www.phoreveryoung.com or www.pmiracle.com



Live and Dried Blood Cell An



Analysis



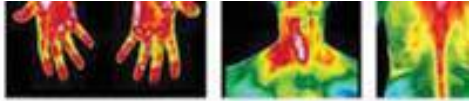
Young

Bioactive Non-Invasive Scan

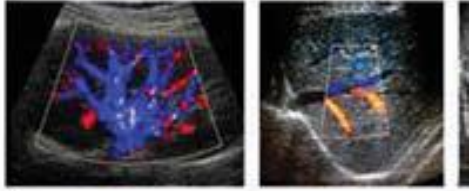
“Blood never lies” ~ Dr. Robert O.

Full Body Medical Diagnostic Comprehensive Non-Rad

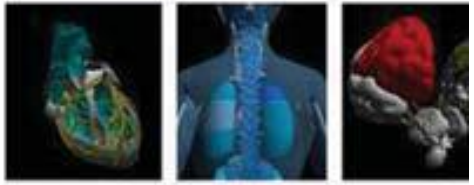




Medical Diagnost



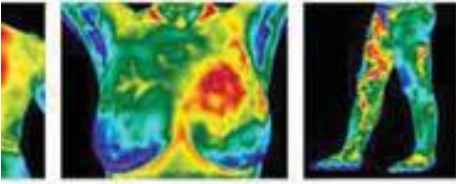
3D Bio - Elec



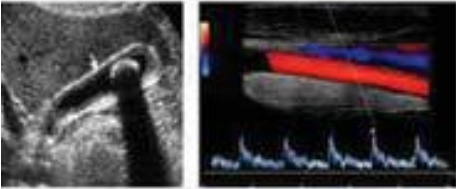
“Health Education Instead of Radiation and Medication”

© www.universalmedicalimaging.com

Thermography



Doppler Ultrasound



Electro Scan



on” ~ Dr. Galina Migalko

n